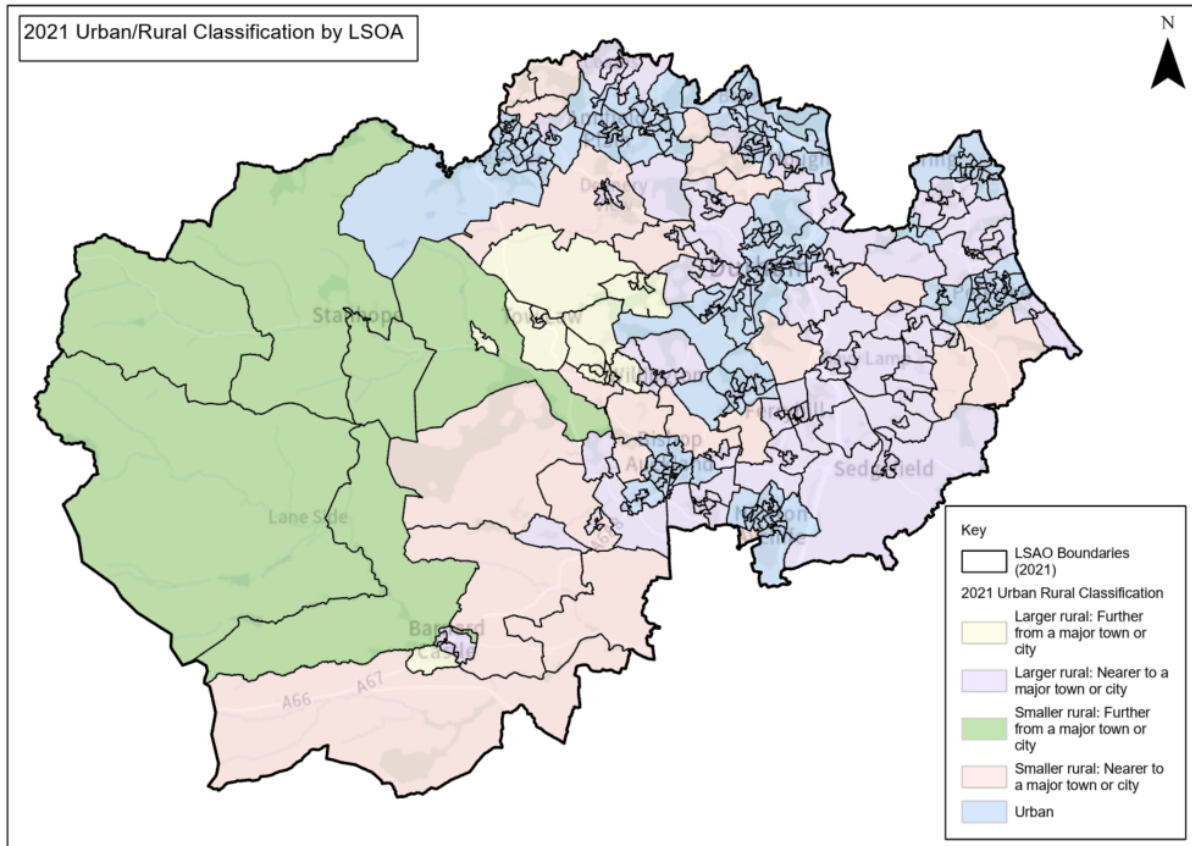




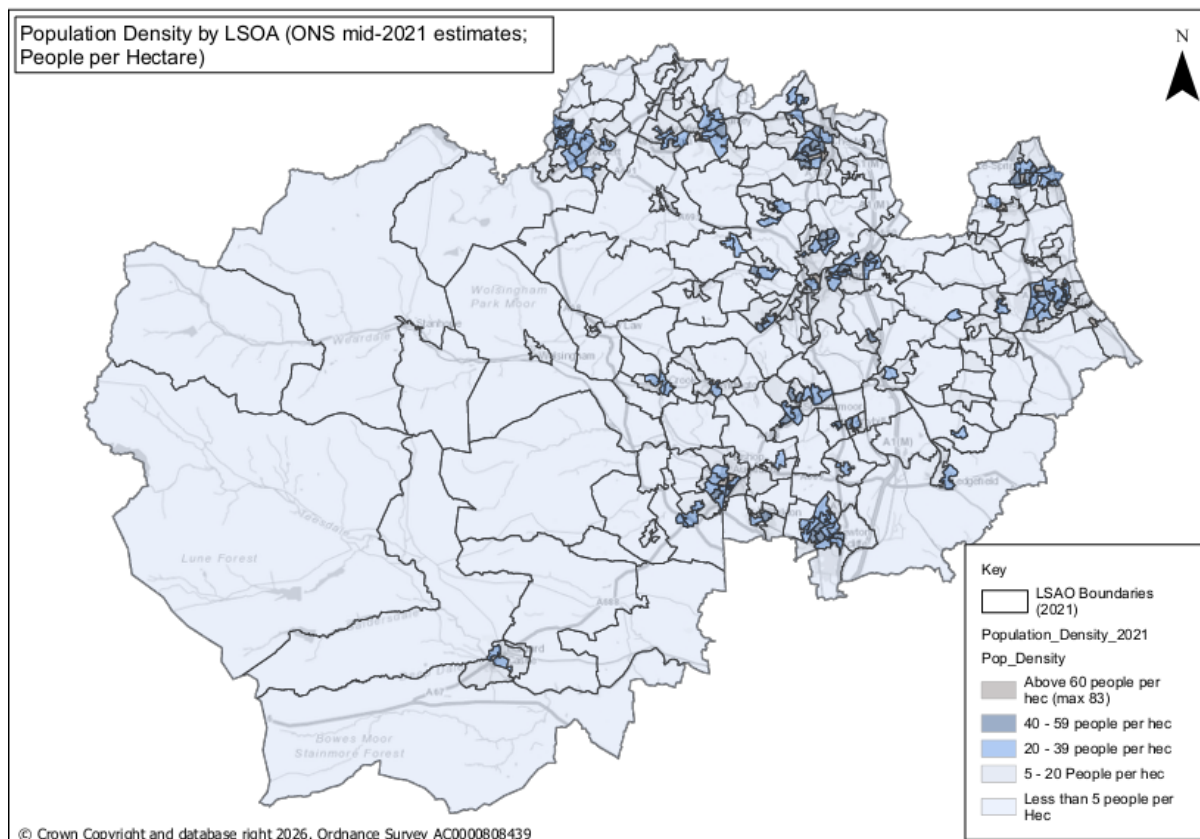
Appendix A: The data

May 2026

Map 1: Rural Urban Classification by Lower Layer Super Output Area (LSOA) in County Durham



Map 2: Population Density by LSOA Office of National Statistics (ONS) mid-2021 Population Estimates



© Crown Copyright and database right 2026. Ordnance Survey AC0000808439

List 1: All LSOAs currently designated by condition met

Low Demand

- Chester Central 2
- Consett South
- Consett West
- Havannah South
- Leadgate North
- Leadgate Central
- Kelloe
- Waterhouses
- Blackhall Rocks North
- Dawdon South 2
- Haswell
- Horden South
- West Cornforth
- Shildon West
- Cockton Hill East
- Cockton Hill North
- Newfield
- Roddymoor
- Henknowle North
- Hunwick
- Tow Law Central
- Stanley Crook
- Tow Law Rural
- Dalton Park
- Murton East
- South Hetton East

Anti-social Behaviour (ASB)

- Catchgate North
- Murton Central
- Passfield North
- Ferryhill Dean Bank South
- Sunnybrow

Deprivation

- Chester West 2
- Pelton North
- Pelton Fell
- Annfield Plain
- Moorside West
- Craghead North
- Stanley Hall West
- Stanley Hall North
- Bearpark

- Esh Winning
- Ushaw Moor East
- Acre Rigg South
- Acre Rigg North
- Blackhall Rocks South
- Blackhall Colliery North
- Dawdon South 1
- Dene House East
- Dene House Central
- Easington Colliery South
- Eden Hill South
- Eden Hill Central
- Eden Hill North
- Shotton East
- Shotton Colliery Central
- Horden North
- Horden West
- Howletch East
- Dalton le Dale
- Passfield East
- Seaham Harbour South
- Wheatley Hill South
- Wingate West
- Trimdon South
- Midridge South
- Low Spennymoor
- Middlestone Moor
- Thickley
- Shildon East
- West South
- West Central
- West North
- Woodham Village SW
- Crook East
- Willington Central
- Woodhouse Close South
- Murton Moor & Sth Hetton

Low demand, ASB and deprivation

- Grange Villa
- New Kyo
- South Moor North
- South Moor Central
- South Moor South
- Blackhall Colliery South
- Dawdon North 2
- Easington Colliery Central

- Easington Colliery North
- Horden Central
- Horden East
- Wheatley Hill North
- Deaf Hill
- Station Town
- New Shildon
- Ferryhill Dean Bank North
- Spennymoor Central
- Eldon
- Sunnydale
- Toronto
- Coundon South
- Crook Central 2
- Coundon Grange
- Henknowle South
- West Auckland East
- Ferryhill South & Station

Table 1: Datasets by Criteria

Criteria	Dataset	Period Covered	Comparison Area
Low Demand	Average House Price	2022/23 - 2024/25	North-east
Low Demand	Property Vacancies	2022/23 - 2024/25	North-east
Low Demand	Property Turnover	2022/23 - 2024/25	County Durham
Anti-social Behaviour	Police ASB	2023/24 – 2025/26	North-east
Anti-social Behaviour	Fire Brigade - Secondary Fires	2023/24 – 2025/26	North-east
Anti-social Behaviour	Durham County Council (DCC) ASB and Noise Complaints	2023/24 - 2025/26	County Durham
Deprivation	Index of Deprivation 2025	2025	England

Table 2: ASB datasets and categories

Police ASB categories	Fire - ASB categories	DCC - ASB categories	DCC - Noise Categories
Environmental	Secondary Fires	Environmental	Noise-Barking Dog
Nuisance		Nuisance	Noise-Music
Personal		Personal	Noise-Other Animals and Birds
			Noise-Party
			Noise-People
			Noise-Unidentified/other
			Noise-Vehicles / Transport

Table 3: Properties sold or rented through Rightmove (Between April 2022 - March 2025)

LSOA Name	Proportion of properties sold (2022-2025)	Proportion of properties rented (2022-2025)
Acre Rigg Central	8.4%	1.9%
Acre Rigg North	7.6%	2.0%
Acre Rigg South	10.9%	3.3%
Annfield Plain	6.3%	2.7%
Aycliffe Ind Estate	6.9%	0.9%
Aykley Heads	9.7%	4.8%
Barnard Castle East	8.8%	1.2%
Barnard Castle North	11.6%	2.1%
Barnard Castle West	10.0%	2.0%
Barningham & Greta	5.8%	1.6%
Bearpark	7.0%	1.1%
Belmont	8.2%	3.2%
Belmont Rennys Lane	9.5%	1.7%
Benfieldside Central	6.5%	0.9%
Benfieldside North	10.6%	1.8%
Benfieldside South	9.9%	2.7%
Bishop Auckland Town	12.3%	2.7%
Bishop Middleham	10.2%	2.5%
Blackhall Colliery North	10.7%	2.1%
Blackhall Colliery South	16.8%	4.8%
Blackhall Rocks	9.5%	1.5%
Blackhill Central	5.5%	1.2%
Blackhill East	11.7%	2.5%
Blackhill West	6.6%	0.5%
Bournmoor East	6.4%	1.5%
Bournmoor West	12.0%	4.1%
Bowburn North	9.4%	3.0%
Bowburn South	14.3%	7.7%

Brancepeth	6.0%	1.2%
Brandon Central	5.3%	1.4%
Brandon East	5.1%	2.2%
Brandon North	7.3%	2.6%
Brandon South	8.7%	2.1%
Brasside	11.8%	4.6%
Broompark	9.6%	3.6%
Burnhope	8.9%	0.9%
Burnopfield Central	10.1%	0.0%
Burnopfield East	14.1%	0.0%
Burnopfield West	10.8%	0.0%
Byers Green	9.4%	1.3%
Carrville North	11.4%	4.5%
Carrville South	10.4%	3.3%
Cassop	9.2%	3.3%
Castle Eden	7.1%	0.7%
Castleside	7.5%	1.1%
Catchgate North	9.5%	2.8%
Catchgate South	9.6%	2.9%
Chester Central 1	2.7%	1.7%
Chester Central 2	11.3%	7.5%
Chester East 1	13.2%	6.6%
Chester East 2	8.6%	1.5%
Chester North 1	9.0%	2.2%
Chester North 2	7.0%	2.3%
Chester North 3	10.7%	6.3%
Chester South 1	5.4%	1.7%
Chester South 2	8.1%	0.9%
Chester West 1	7.7%	2.0%
Chester West 2	6.7%	2.2%
Chilton	8.1%	1.4%

Chilton North	9.7%	1.9%
Chilton South and Rushyford	11.1%	1.9%
Cockfield	7.7%	2.2%
Cockton Hill East	13.2%	3.7%
Cockton Hill North	11.4%	3.7%
Cockton Hill West	7.1%	0.6%
Consett and Genisis Way	14.1%	1.3%
Consett East	9.8%	2.2%
Consett North	7.9%	3.2%
Consett South	11.7%	2.3%
Consett West	11.6%	3.5%
Cornsay Colliery	6.7%	1.5%
Coundon Grange	17.6%	5.1%
Coundon North	4.6%	1.4%
Coundon South	13.8%	3.6%
Coxhoe Central	7.9%	2.0%
Coxhoe North	6.6%	2.2%
Coxhoe South	13.2%	1.5%
Craghead North	11.1%	1.2%
Craghead South	7.7%	2.3%
Crook Central 1	6.2%	0.4%
Crook Central 2	11.1%	3.4%
Crook East	6.7%	1.7%
Crook West	9.7%	1.5%
Crookhall	10.7%	0.8%
Crossgate Moor North	4.4%	7.6%
Crossgate Moor South	5.2%	7.3%
Dalton le Dale	4.8%	1.1%
Dalton Park	12.5%	3.6%
Dawdon North 1	11.4%	0.7%
Dawdon North 2	13.9%	4.8%

Dawdon South 1	8.1%	1.1%
Dawdon South 2	14.0%	1.5%
Deaf Hill	12.2%	3.1%
Delves North	9.1%	1.4%
Delves South	8.7%	0.8%
Dene House Central	7.5%	3.0%
Dene House East	10.4%	1.2%
Dene House West	9.6%	2.4%
Deneside East	8.0%	1.3%
Deneside North	3.3%	0.7%
Deneside South	9.0%	0.7%
Deneside West	4.6%	1.3%
Dipton East	9.6%	0.9%
Dipton West	8.6%	0.8%
Drum Lane	8.1%	1.1%
Easington Colliery Central	19.2%	5.6%
Easington Colliery North	23.3%	6.0%
Easington Colliery South	8.2%	1.2%
Easington Village North	3.6%	0.3%
Easington Village South	9.5%	0.4%
Ebchester	7.2%	1.1%
Eden Hill Central	7.7%	3.5%
Eden Hill North	8.1%	3.4%
Eden Hill South	10.2%	2.3%
Edmondsley	5.7%	1.6%
Eggleston & Cotherstone	6.7%	1.1%
Eldon	14.5%	3.7%
Escomb East	7.7%	0.8%
Escomb West	9.5%	0.6%
Esh Winning	6.6%	2.6%
Evenwood	10.7%	1.1%

Ferryhill Central East	5.0%	0.4%
Ferryhill Central West	9.9%	2.3%
Ferryhill Dean Bank North	21.9%	5.6%
Ferryhill Dean Bank South	6.5%	0.9%
Ferryhill North	10.4%	1.4%
Ferryhill South	10.7%	1.8%
Ferryhill Station and Chilton Lane	16.7%	5.3%
Fishburn	11.3%	3.6%
Fishburn Central	10.7%	2.0%
Framwellgate Moor East	7.6%	5.3%
Framwellgate Moor West	12.7%	6.0%
Frosterly	7.6%	1.7%
Gilesgate Moor North	11.2%	3.1%
Gilesgate Moor South	7.8%	5.8%
Gilesgate North	7.6%	3.8%
Gilesgate South	8.2%	9.3%
Grange Villa	13.6%	4.7%
Great Lumley Central	9.0%	1.5%
Great Lumley East	7.5%	1.3%
Great Lumley West	8.5%	1.2%
Greencroft	10.5%	3.4%
Hamsterley	8.3%	1.0%
Hamsterley Mill	9.2%	0.1%
Haswell	7.8%	1.3%
Havannah Central	10.3%	2.2%
Havannah North	11.2%	2.7%
Havannah South	11.2%	2.7%
Helmington row	10.4%	2.5%
Henknowle Central	7.2%	1.1%
Henknowle North	15.2%	4.1%
Henknowle South	10.6%	2.4%

Hett	9.3%	2.1%
High Etherley	7.3%	0.2%
High Urpeth	8.8%	1.4%
Horden Central	22.5%	7.0%
Horden East	13.6%	3.9%
Horden North	6.9%	2.2%
Horden South	10.2%	1.4%
Horden West	10.7%	1.6%
Howden le Wear	9.9%	2.4%
Howletch East	8.0%	2.4%
Howletch North	6.3%	1.3%
Howletch South	9.6%	2.4%
Hunwick	10.1%	0.9%
Ingleton	6.3%	0.0%
Kelloe	7.1%	1.5%
Kirk Merrington	10.8%	1.3%
Lanchester Central East	8.7%	0.6%
Lanchester Central West	8.3%	0.9%
Lanchester Rural	9.2%	1.0%
Langley Moor and Littleburn	12.2%	7.6%
Langley Moor and Meadowfield	8.6%	2.9%
Langley Park East	10.4%	4.3%
Langley Park West	10.6%	3.8%
Leadgate Central	10.6%	3.2%
Leadgate North	12.0%	1.3%
Leadgate South	7.4%	1.0%
Leamside	6.4%	2.0%
Low Etherley	10.4%	1.3%
Low Spennymoor	8.4%	2.3%
Medomsley	9.4%	1.2%
Middlestone Moor	7.1%	1.1%

Middleton in Teesdale and Romalkirk	6.3%	2.1%
Midridge Central 1	11.9%	1.3%
Midridge Central 2	8.2%	2.6%
Midridge North	7.6%	1.6%
Midridge South	7.5%	2.8%
Moorside West	7.8%	1.6%
Morley	7.9%	1.0%
Murton Central	4.4%	0.8%
Murton East	15.2%	5.1%
Murton Moor & Sth Hetton	8.6%	1.8%
Murton West	7.9%	0.5%
Neville & Simpasture East	6.9%	0.8%
Neville & Simpasture West	9.4%	1.5%
Nevilles Cross North	8.7%	5.8%
Nevilles Cross South and Cock of the North	6.8%	3.5%
Nevilles Cross South and Merryoaks	8.3%	6.4%
New Kyo	14.6%	5.9%
New Shildon	13.9%	4.1%
Newfield	14.2%	0.9%
Newton Hall North East	10.4%	2.1%
Newton Hall North West	9.6%	3.5%
Newton Hall South	6.6%	2.3%
Newton Hall South East	8.4%	3.1%
Newton Hall South West	8.6%	4.0%
Oakenshaw	8.2%	1.9%
Old Elvet & Whinney Hill	5.8%	5.1%
Ouston North	5.4%	0.2%
Ouston South	8.6%	1.9%
Passfield East	5.5%	1.5%
Passfield North	7.6%	1.7%
Passfield South	8.0%	0.8%

Passfield West	9.6%	0.3%
Pelton Fell	7.4%	1.4%
Pelton North	5.9%	1.5%
Pelton South	9.7%	2.3%
Pelton West	12.1%	1.1%
Picktree	10.2%	1.2%
Pittington	9.3%	1.1%
Pity Me	7.6%	7.6%
Plawsworth	8.4%	1.9%
Quebec	10.4%	1.2%
Roddymoor	8.1%	2.4%
Sacriston East	7.1%	3.1%
Sacriston North	8.5%	2.0%
Sacriston West	12.6%	4.4%
School Aycliffe	6.7%	0.9%
Seaham Hall	9.9%	0.9%
Seaham Harbour Central 1	12.0%	3.2%
Seaham Harbour Central 2	8.8%	0.7%
Seaham Harbour South	9.1%	1.9%
Seaham North 1	7.8%	0.4%
Seaham North 2	6.7%	0.7%
Seaton East and Northlea	8.4%	1.1%
Sedgefield East	13.1%	1.3%
Sedgefield Mordon	6.2%	1.1%
Sedgefield West	9.5%	3.9%
Shadforth	12.6%	2.9%
Shafto St Marys East	10.9%	1.3%
Shafto St Marys North	6.2%	1.8%
Shafto St Marys South	6.8%	1.4%
Shafto St Marys West	8.7%	1.5%
Sherburn North	8.4%	1.1%

Sherburn Road	2.9%	1.8%
Sherburn South	8.7%	1.3%
Shildon East	9.0%	1.0%
Shildon West	15.0%	5.4%
Shincliffe	10.7%	4.2%
Shotton Colliery Central	6.4%	1.8%
Shotton Colliery West	9.3%	0.9%
Shotton East	13.2%	4.3%
South Church	9.1%	1.8%
South Hetton East	11.8%	3.1%
South Moor Central	18.3%	8.2%
South Moor North	10.3%	1.6%
South Moor South	11.1%	3.1%
Spennymoor Central	16.1%	4.8%
Spennymoor Mount Pleasant	8.3%	1.2%
Spennymoor Rock Road	9.7%	1.5%
Spennymoor Tudhoe Moor	12.4%	1.9%
Spennymoor Whitworth Park	10.5%	1.7%
St Helens Auckland Central	7.3%	2.1%
St Helens Auckland Tindale Crescent	13.1%	4.0%
St Johns Chapel	8.5%	0.3%
St Nicholas and Houghall	4.1%	5.5%
Staindrop	6.8%	0.4%
Stanhope	5.3%	1.0%
Stanley Crook	9.8%	1.8%
Stanley Hall East	7.7%	2.0%
Stanley Hall North	7.6%	2.1%
Stanley Hall South	6.0%	1.8%
Stanley Hall West	7.1%	1.7%
Startforth	10.1%	2.6%
Station Town	10.3%	3.4%

Sunnybrow	5.8%	0.6%
Sunnydale	10.4%	2.2%
Tanfield & Tantobie	7.0%	1.1%
Tanfield Lea East	7.9%	1.0%
Tanfield Lea West	7.0%	0.8%
The Grove North	11.1%	1.6%
The Grove South and Moorside East	8.1%	2.0%
The Sands and St Bede	4.3%	5.2%
Thickley	10.2%	1.4%
Thornley North	7.2%	1.6%
Thornley South	9.6%	1.3%
Toronto	11.6%	3.3%
Tow Law Central	7.1%	1.6%
Tow Law Rural	7.9%	1.3%
Trimdon Grange	9.9%	3.3%
Trimdon North	9.4%	1.1%
Trimdon South	5.5%	1.1%
Tudhoe	9.4%	1.5%
Tudhoe Grange East	7.6%	1.9%
Tudhoe Grange North	8.5%	0.6%
Tudhoe Grange South	5.8%	0.2%
Tudhoe Grange West	9.2%	0.5%
Urpeth	11.0%	2.9%
Ushaw Moor East	4.8%	2.6%
Ushaw Moor South and New Brancepeth	9.5%	3.2%
Ushaw Moor West	14.1%	5.5%
Waldrige North	11.7%	2.1%
Waldrige South	7.1%	1.2%
Waterhouses	8.0%	2.9%
West Auckland East	9.4%	2.9%
West Auckland West	7.7%	1.5%

West Central	6.2%	1.8%
West Cornforth	12.1%	3.2%
West North	8.4%	3.8%
West Rainton	9.9%	1.5%
West South	7.9%	1.0%
Wheatley Hill North	10.6%	3.2%
Wheatley Hill South	10.6%	3.7%
Willington Central	10.2%	2.0%
Willington East	7.3%	1.4%
Willington West	13.6%	2.3%
Wingate East	7.8%	1.0%
Wingate West	7.6%	1.1%
Witton Gilbert North	5.3%	1.8%
Witton Gilbert South	6.7%	1.2%
Wolsingham	8.0%	1.3%
Wolsingham Rural	6.5%	1.7%
Woodham Village NE	11.8%	1.8%
Woodham Village NW	11.6%	2.0%
Woodham Village SE	12.6%	1.5%
Woodham Village SW	7.0%	2.1%
Woodhouse Close Central	4.3%	1.0%
Woodhouse Close North	7.1%	1.0%
Woodhouse Close South	9.5%	2.9%

Table 4: Turnover rate per LSOA in proposed designations (April 2022 – March 2025)

LSOA Name	Properties with turnover	Residential properties	Rate per 10k	Proposed designation due to condition met
Easington Colliery North	176	707	2489.4	Low Demand, ASB and deprivation
Ferryhill Dean Bank North	185	774	2390.2	Low Demand, ASB and deprivation
Horden Central	179	776	2306.7	Low Demand, ASB and deprivation

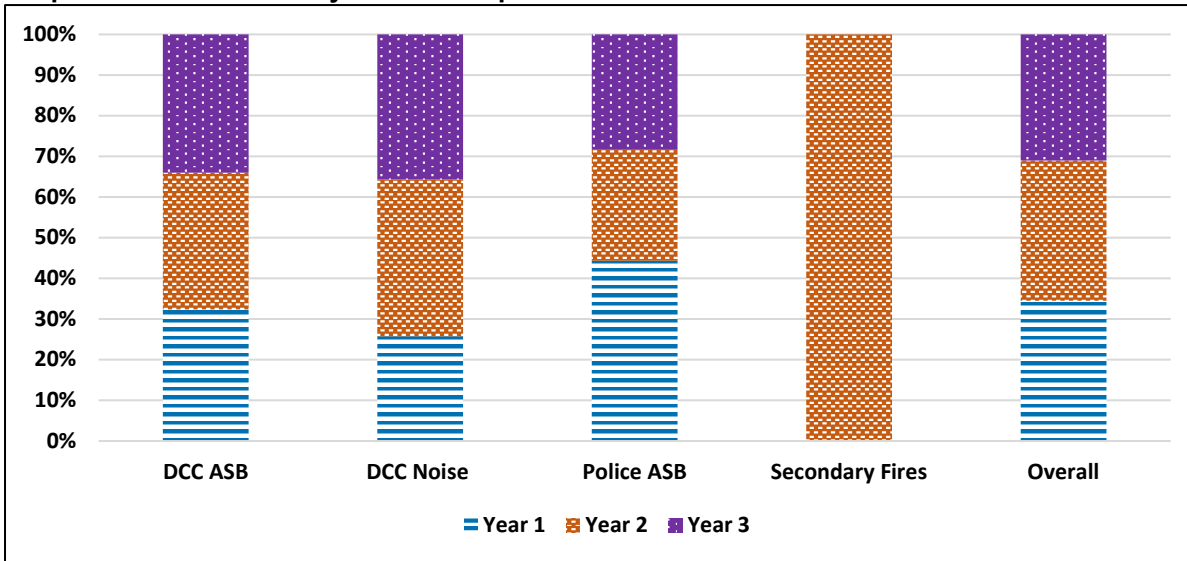
Blackhall Colliery South	176	787	2236.3	Low Demand, ASB and deprivation
Coundon Grange	188	944	1991.5	Low Demand, ASB and deprivation
Ferryhill Station and Chilton Lane	125	654	1911.3	Low Demand, ASB and deprivation
Murton East	129	712	1811.8	Low Demand
Horden East	171	954	1792.5	Low Demand, ASB and deprivation
Dawdon North 2	97	576	1684.0	Low Demand, ASB and deprivation
South Moor Central	113	700	1614.3	Low Demand, ASB and deprivation
Grange Villa	128	803	1594.0	Low Demand, ASB and deprivation
Midridge South	95	596	1594.0	Deprivation
New Kyo	140	889	1574.8	Low Demand, ASB and deprivation
Chester Central 2	112	714	1568.6	ASB
Toronto	107	684	1564.3	Low Demand, ASB and deprivation
Shotton East	112	736	1521.7	Deprivation
Coundon South	129	854	1510.5	Low Demand, ASB and deprivation
Shildon West	116	776	1494.8	Low Demand
New Shildon	152	1031	1474.3	Low Demand, ASB and deprivation
Easington Colliery Central	129	881	1464.2	Low Demand, ASB and deprivation
Eldon	134	921	1454.9	Low Demand, ASB and deprivation
Wheatley Hill North	104	718	1448.5	Low Demand, ASB and deprivation
Spennymoor Central	110	766	1436.0	Low Demand, ASB and deprivation
West South	100	700	1428.6	Deprivation
Eden Hill Central	96	687	1397.4	Deprivation

Cockton Hill North	121	871	1389.2	Low Demand
Seaham Harbour South	115	833	1380.6	Deprivation
West North	87	631	1378.8	Deprivation
Henknowle North	85	620	1371.0	Low Demand
Consett West	150	1100	1363.6	Low Demand
Eden Hill South	76	567	1340.4	Deprivation
Shildon East	114	862	1322.5	Deprivation
West Cornforth	172	1304	1319.0	Low Demand
Greencroft	115	879	1308.3	Low Demand
Eden Hill North	106	814	1302.2	Deprivation
Ferryhill North	91	706	1289.0	Low Demand
Sunnydale	107	834	1283.0	Low Demand, ASB and deprivation
Willington Central	87	684	1271.9	Deprivation
Easington Colliery South	116	917	1265.0	Deprivation
Havannah South	113	899	1257.0	Low Demand
Crook Central 2	99	790	1253.2	Low Demand, ASB and deprivation
Dawdon South 2	97	784	1237.2	Low Demand
Dene House Central	81	655	1236.6	Deprivation
Wheatley Hill South	84	684	1228.1	Deprivation
Dalton Park	86	706	1218.1	Low Demand
Low Spennymoor	129	1061	1215.8	ASB
Station Town	121	996	1214.9	Low Demand, ASB and deprivation
Henknowle South	79	652	1211.7	Deprivation
Spennymoor Mount Pleasant	108	913	1182.9	ASB
Annfield Plain	92	780	1179.5	Deprivation
South Moor South	102	873	1168.4	Low Demand, ASB and deprivation
Leadgate Central	80	704	1136.4	Low Demand
Murton Central	93	819	1135.5	ASB

Deaf Hill	78	703	1109.5	Low Demand, ASB and deprivation
Passfield East	79	727	1086.7	Deprivation
South Moor North	88	815	1079.8	Low Demand, ASB and deprivation
Ferryhill South	79	732	1079.2	Low Demand
Woodham Village SW	59	551	1070.8	Deprivation
Chester Central 1	69	661	1043.9	ASB
Trimdon Grange	86	825	1042.4	Low Demand
Consett South	109	1051	1037.1	Low Demand
Catchgate North	84	810	1037.0	ASB
Acre Rigg North	56	550	1018.2	Deprivation
West Central	67	659	1016.7	Deprivation
Coundon North	72	709	1015.5	ASB
Woodhouse Close South	77	760	1013.2	Deprivation
Acre Rigg South	51	512	996.1	Deprivation
Sunnybrow	67	681	983.8	ASB
Cockton Hill East	67	688	973.8	Low Demand
Howletch East	49	508	964.6	Deprivation
Horden West	71	742	956.9	Deprivation
Passfield North	55	597	921.3	ASB
Stanley Hall West	76	825	921.2	Deprivation
Horden North	71	781	909.1	Deprivation
Haswell	82	907	904.1	Low Demand
Catchgate South	67	751	892.1	Low Demand
Willington West	72	810	888.9	Low Demand
Stanley Hall North	75	849	883.4	Deprivation
Murton Moor & Sth Hetton	60	682	879.8	Deprivation
Ferryhill Dean Bank South	62	719	862.3	ASB
Wingate West	67	778	861.2	Deprivation
Newfield	55	644	854.0	Low Demand

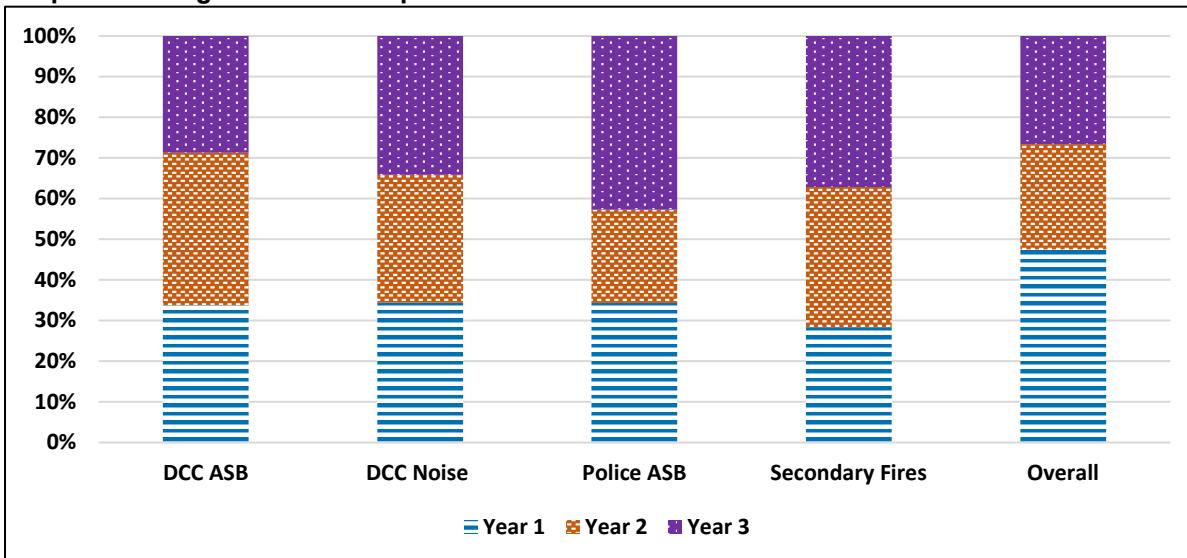
Spennymoor Whitworth Park	77	911	845.2	ASB
Dawdon South 1	56	737	759.8	Deprivation
Stanley Crook	68	916	742.4	Low Demand
Blackhall Colliery North	47	654	718.7	Low Demand
Horden South	44	701	627.7	Deprivation
Total	25582	254999	1003.2	

Graph 1: Blackhall Colliery South ASB persistence

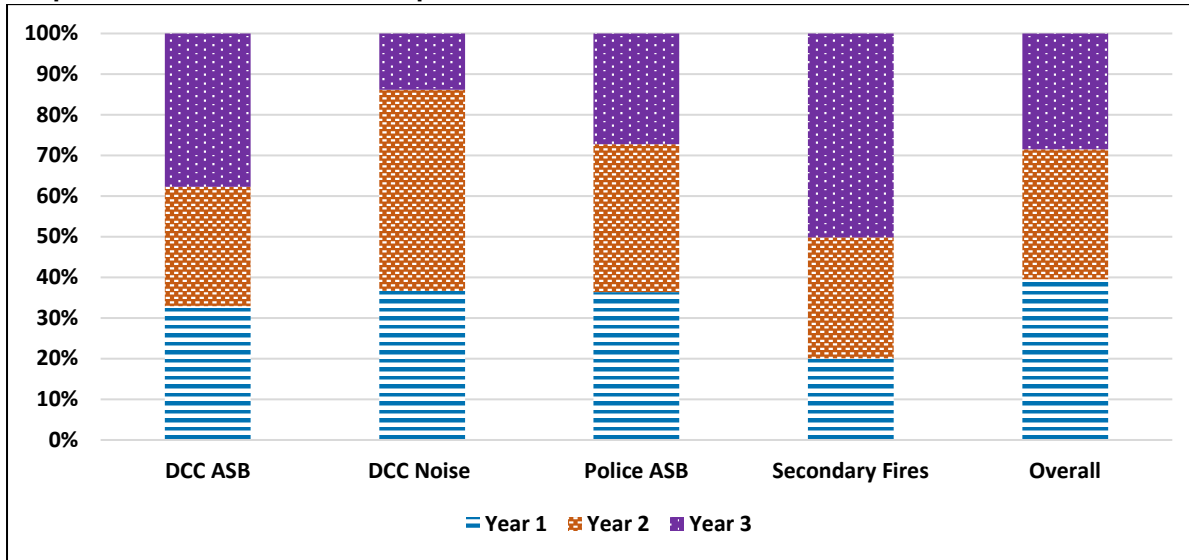


Note: There were no incidents recorded for Secondary Fires in Year 1 and Year 3

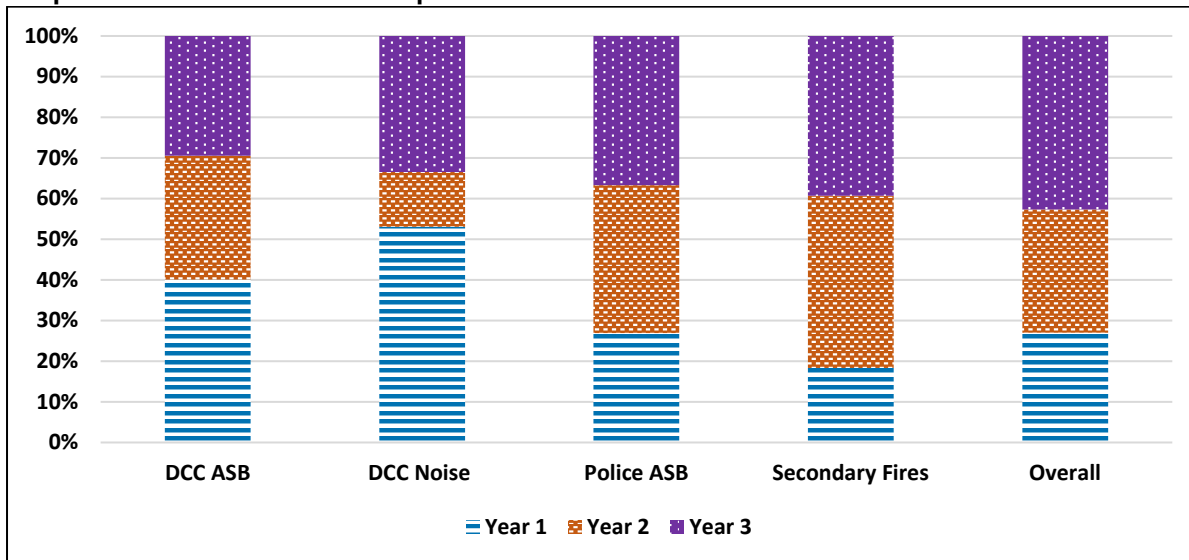
Graph 2: Catchgate North ASB persistence



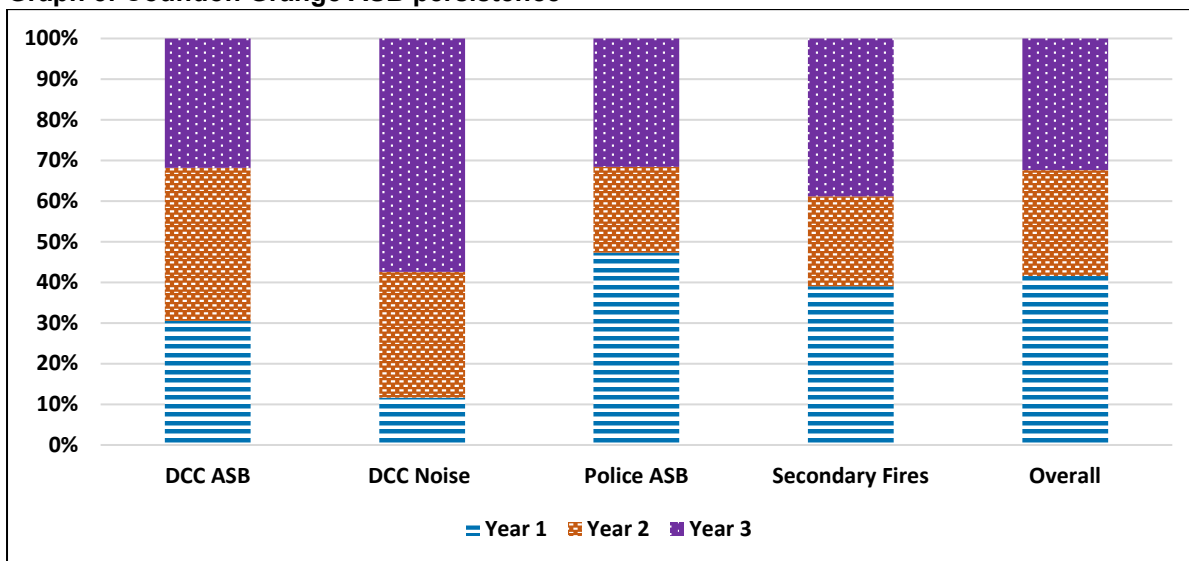
Graph 3: Chester Central 1 ASB persistence



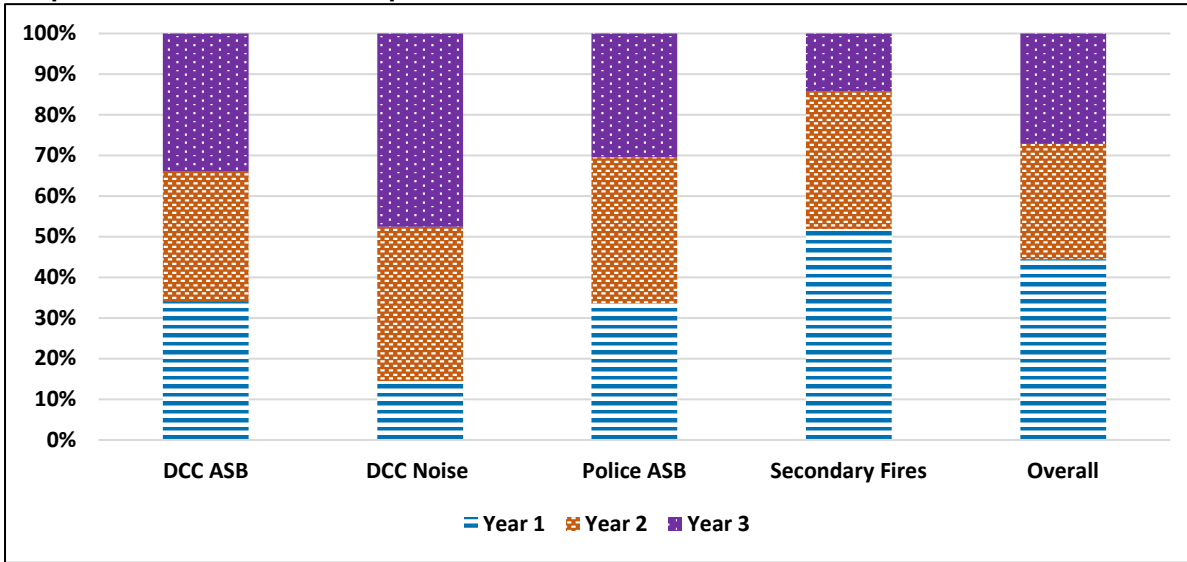
Graph 4: Chester Central 2 ASB persistence



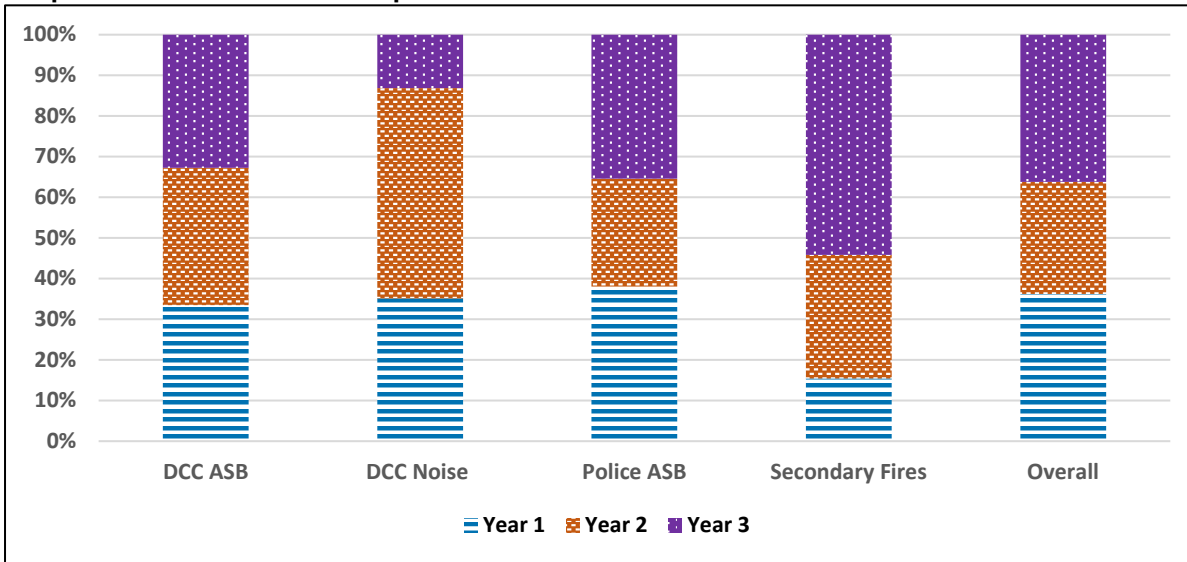
Graph 5: Coundon Grange ASB persistence



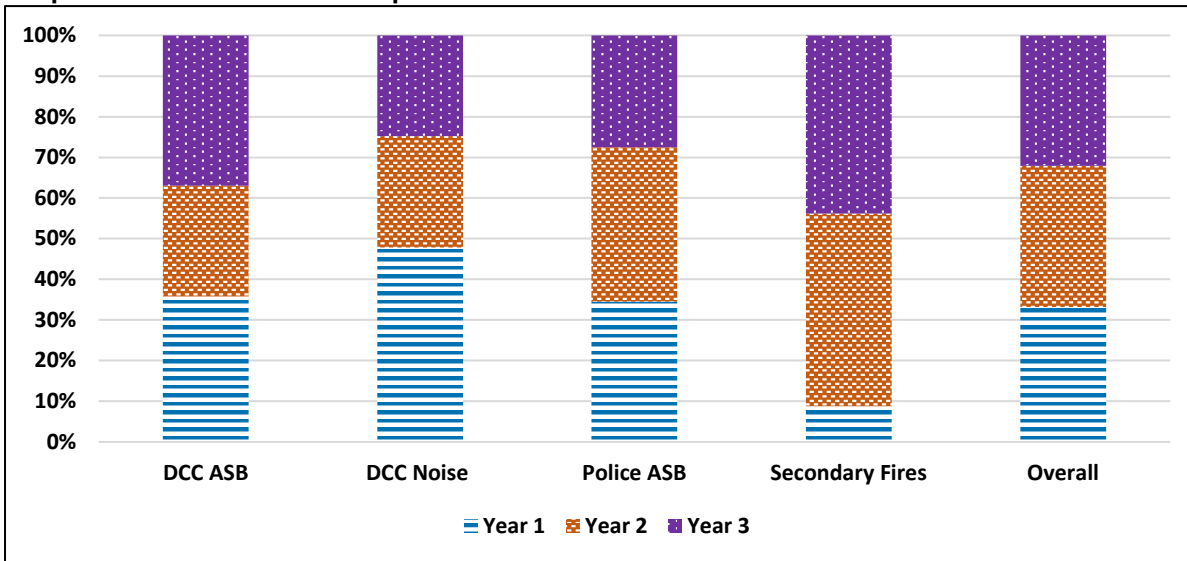
Graph 6: Coundon North ASB persistence



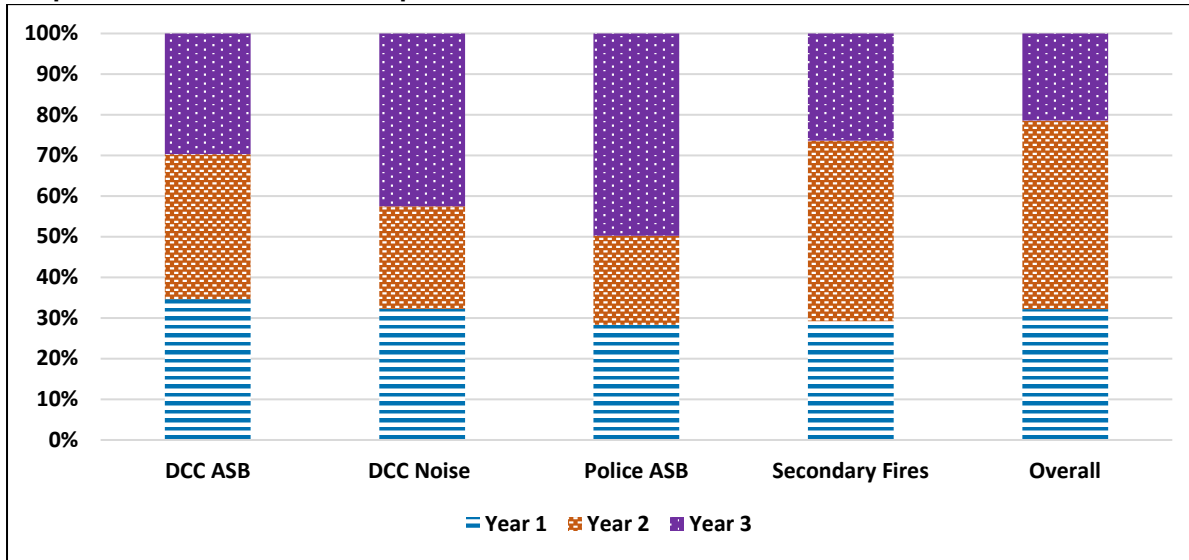
Graph 7: Coundon South ASB persistence



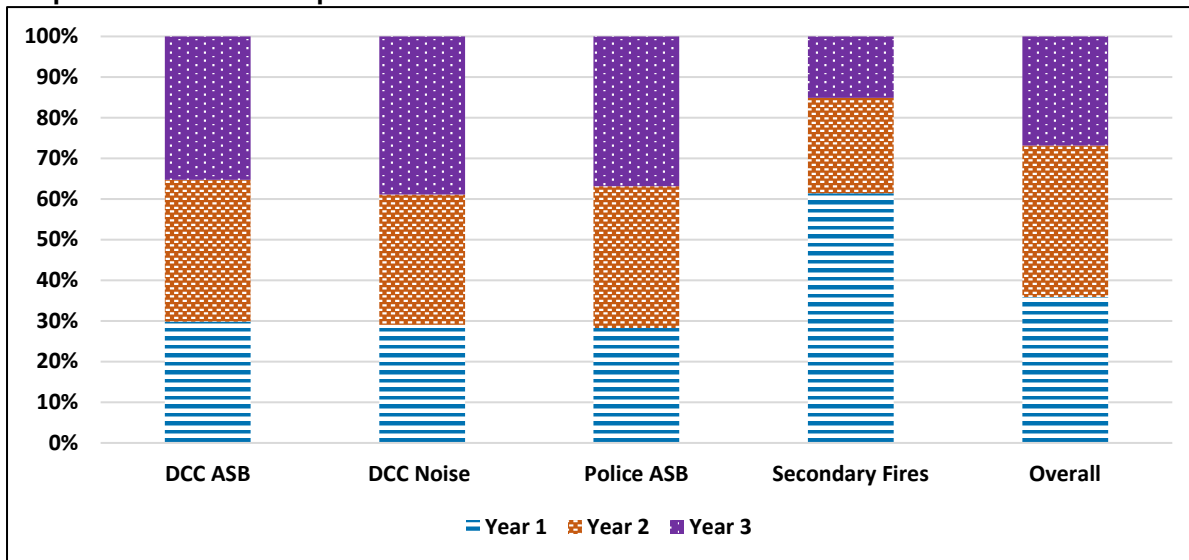
Graph 8: Crook Central 2 ASB persistence



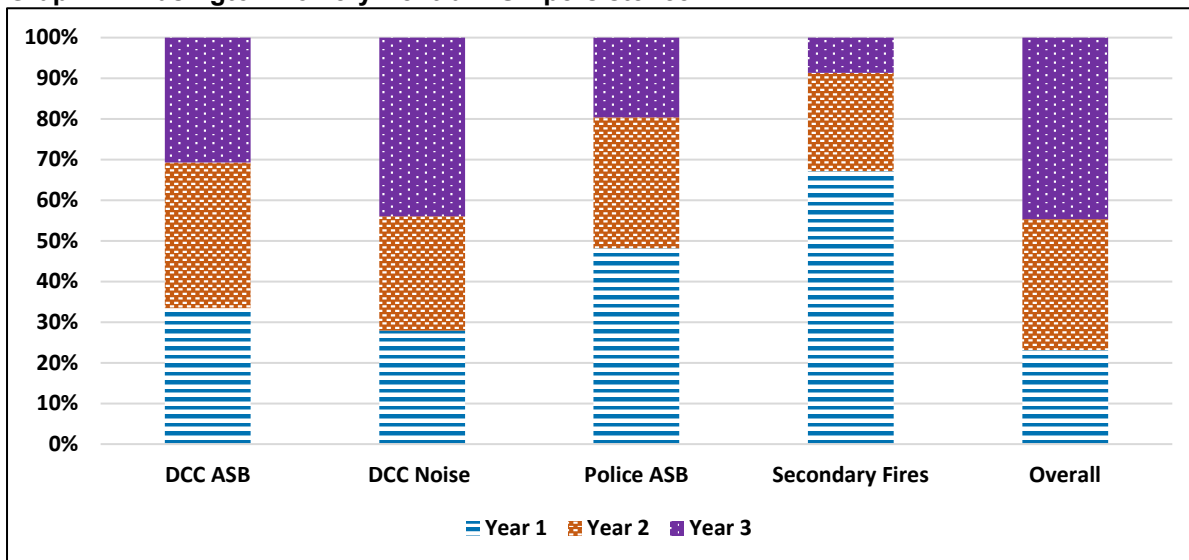
Graph 9: Dawdon North 2 ASB persistence



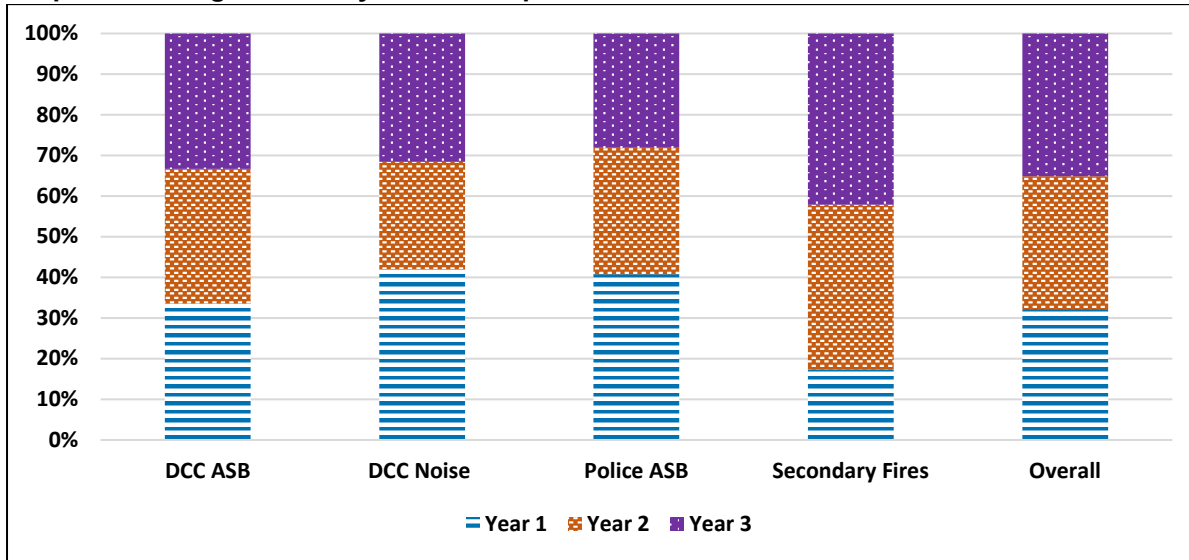
Graph 10: Deaf Hill ASB persistence



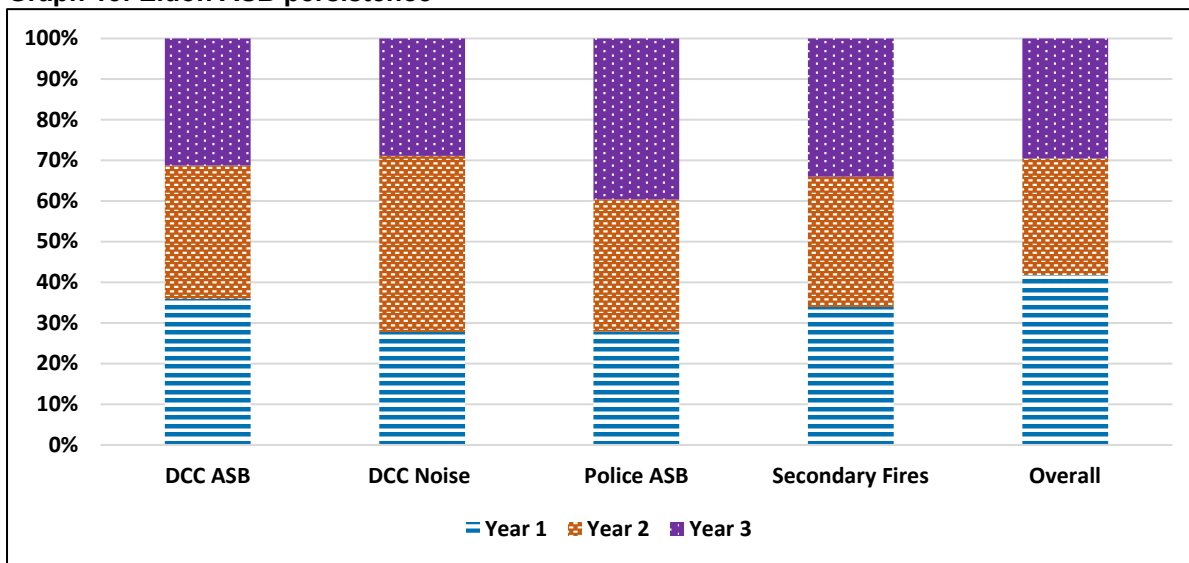
Graph 11: Easington Colliery Central ASB persistence



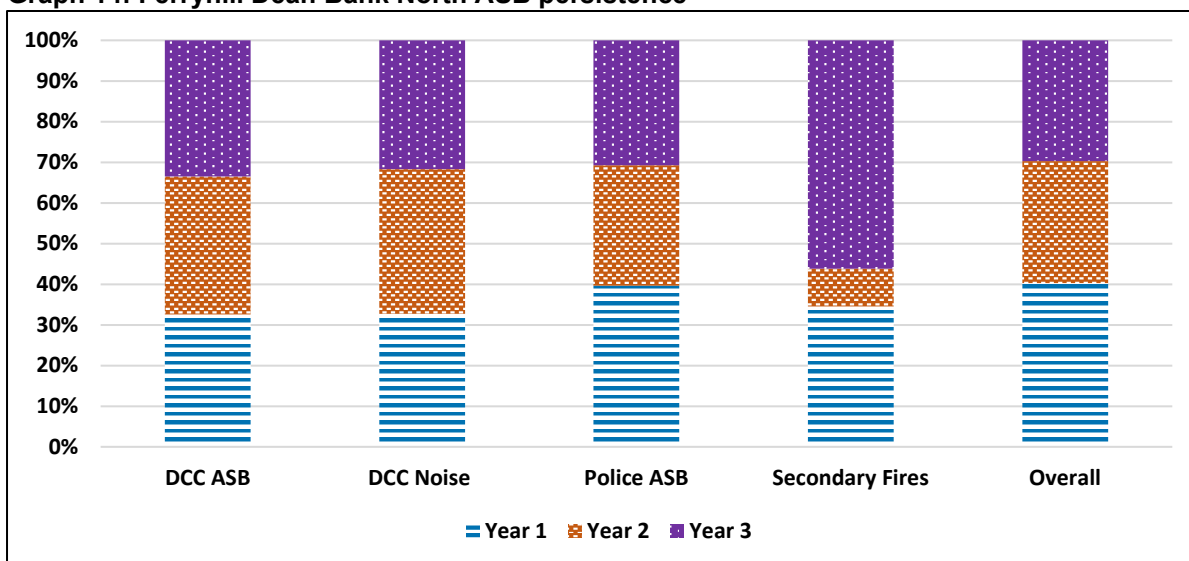
Graph 12: Easington Colliery North ASB persistence



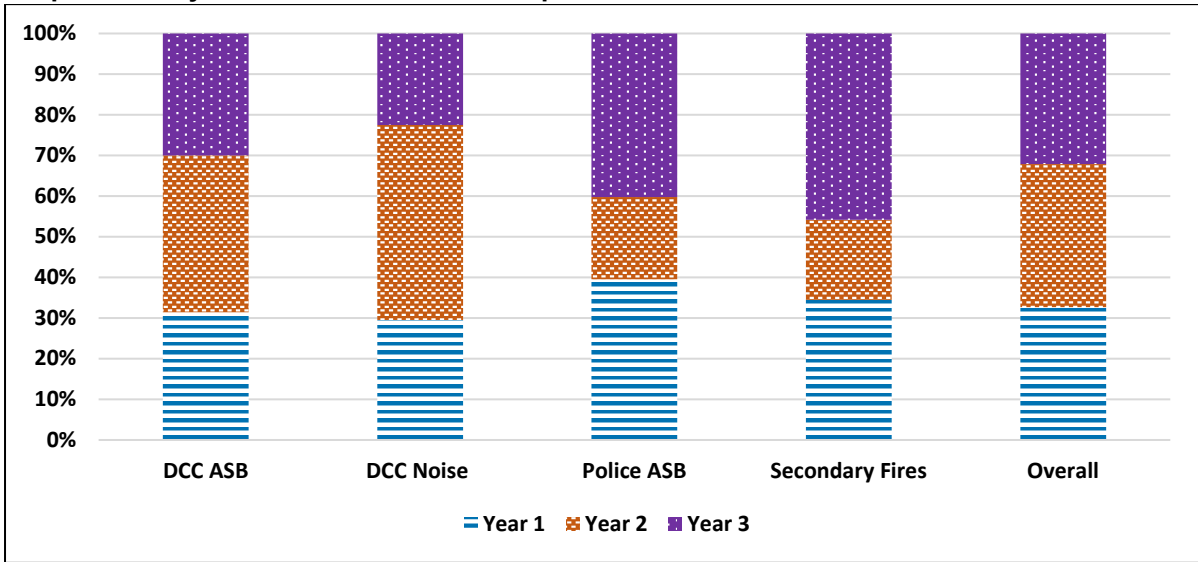
Graph 13: Eldon ASB persistence



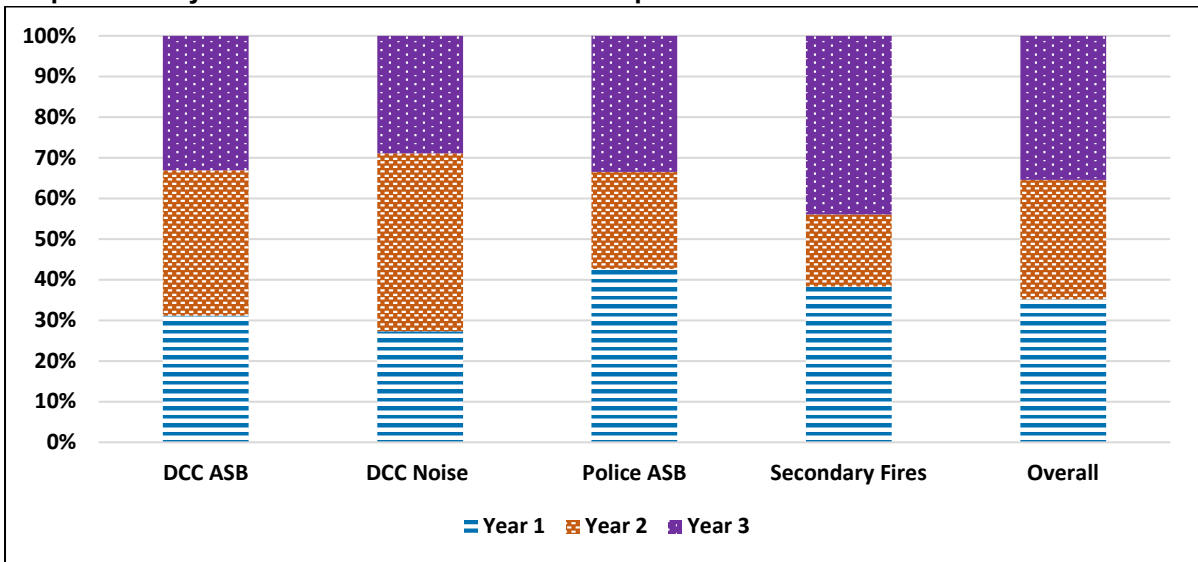
Graph 14: Ferryhill Dean Bank North ASB persistence



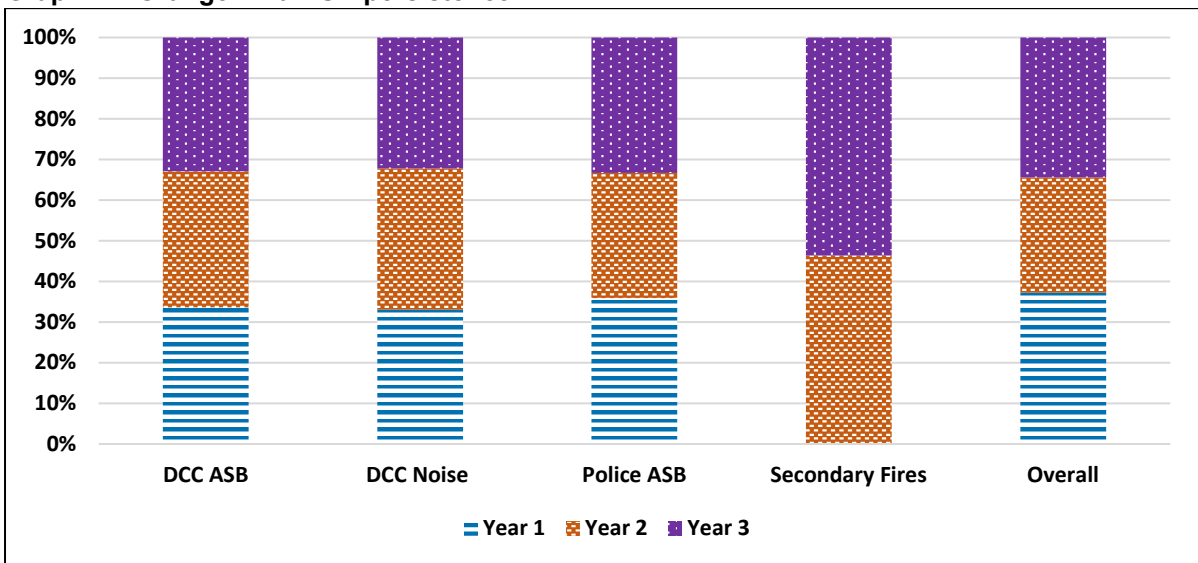
Graph 15: Ferryhill Dean Bank South ASB persistence



Graph 16: Ferryhill Station and Chilton Lane ASB persistence

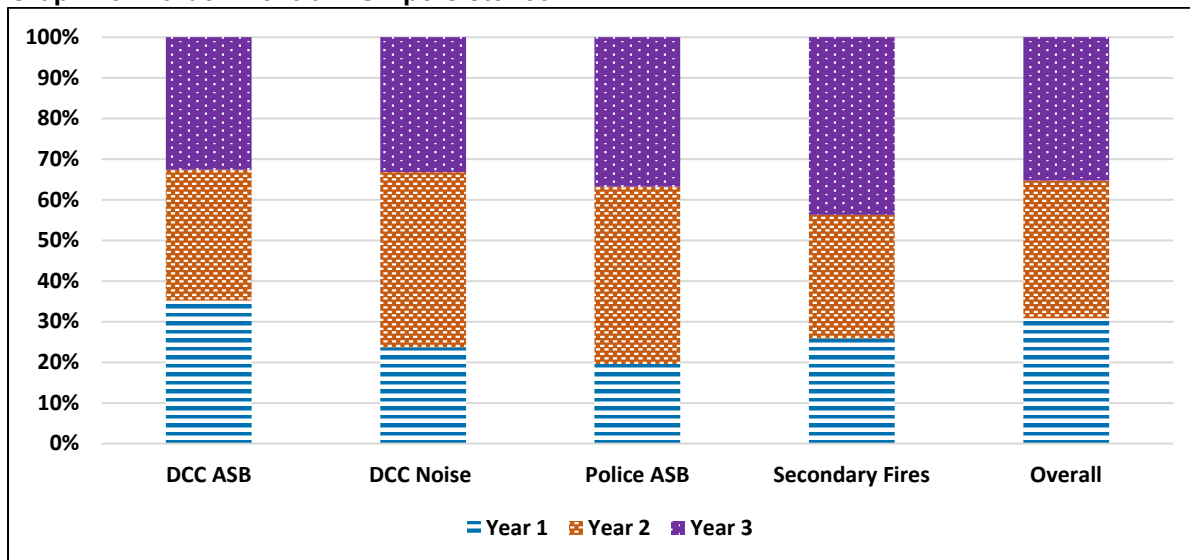


Graph 17: Grange Villa ASB persistence

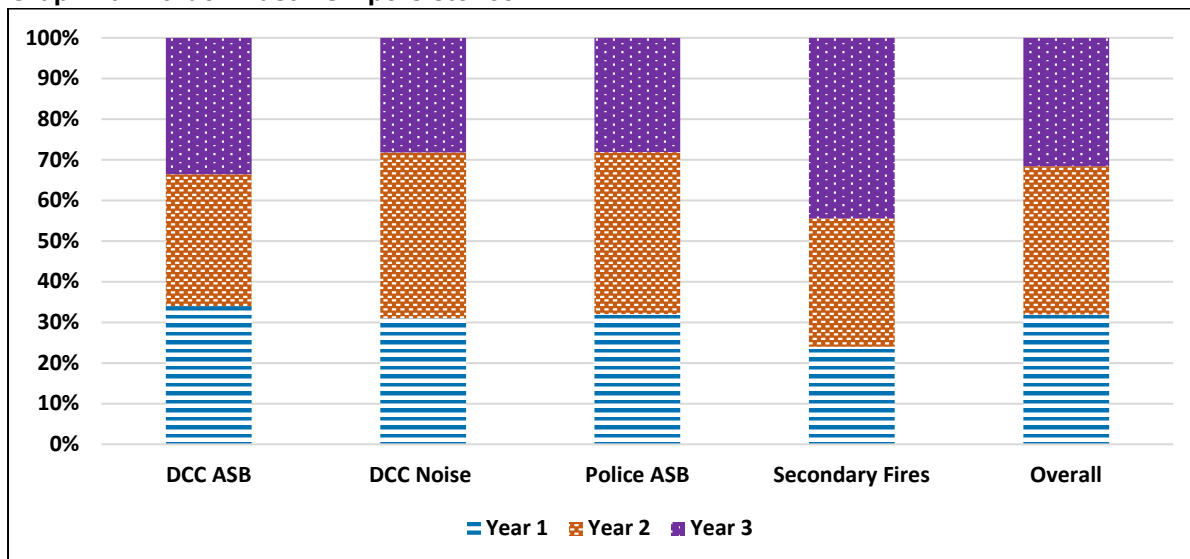


Note: There were no incidents recorded for Secondary Fires in Year 1.

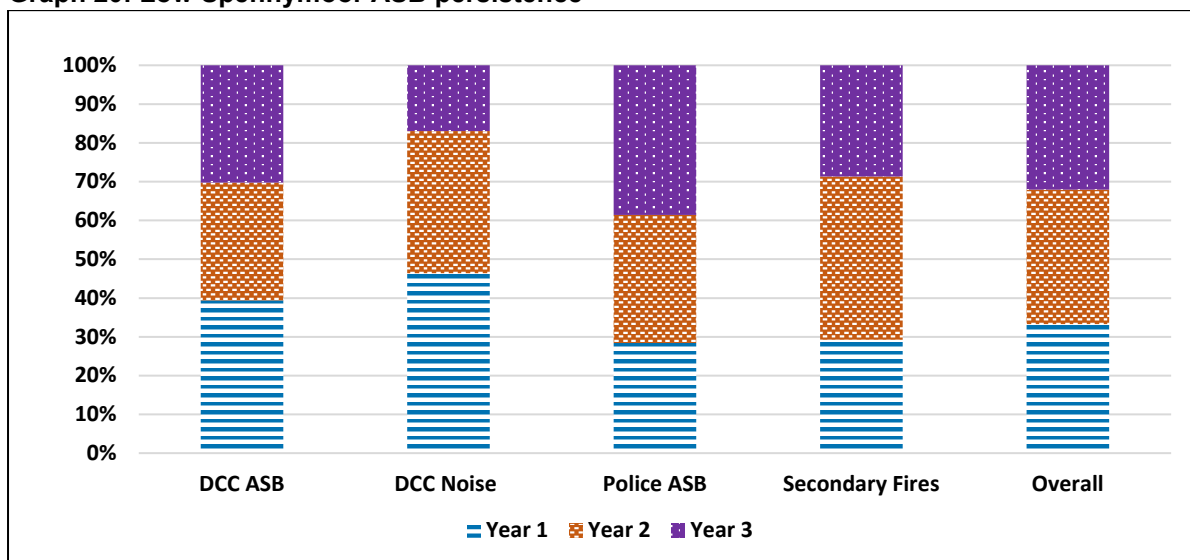
Graph 18: Horden Central ASB persistence



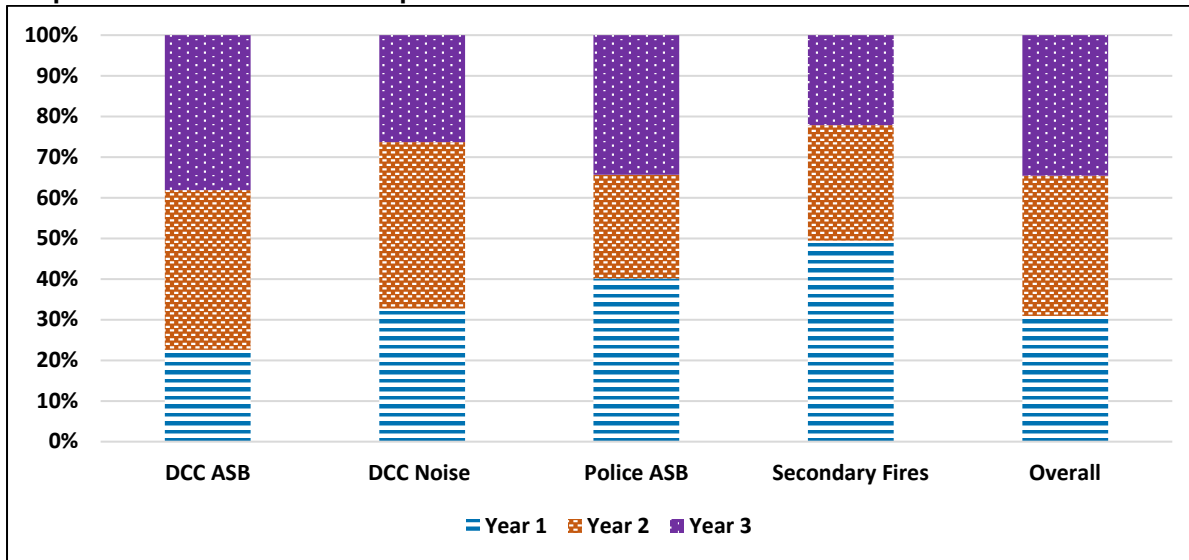
Graph 19: Horden East ASB persistence



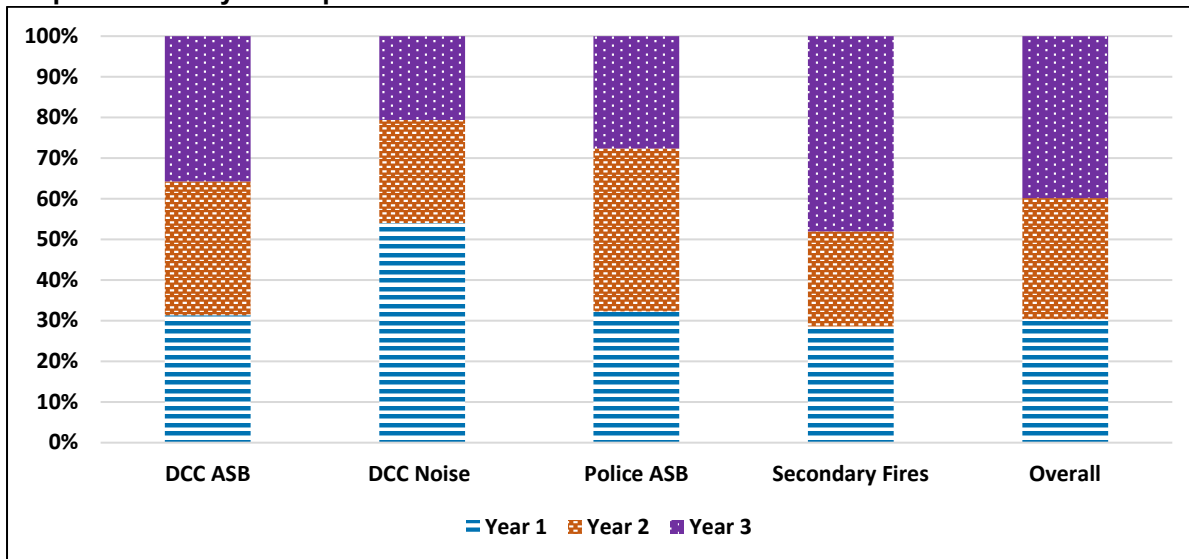
Graph 20: Low Spennymoor ASB persistence



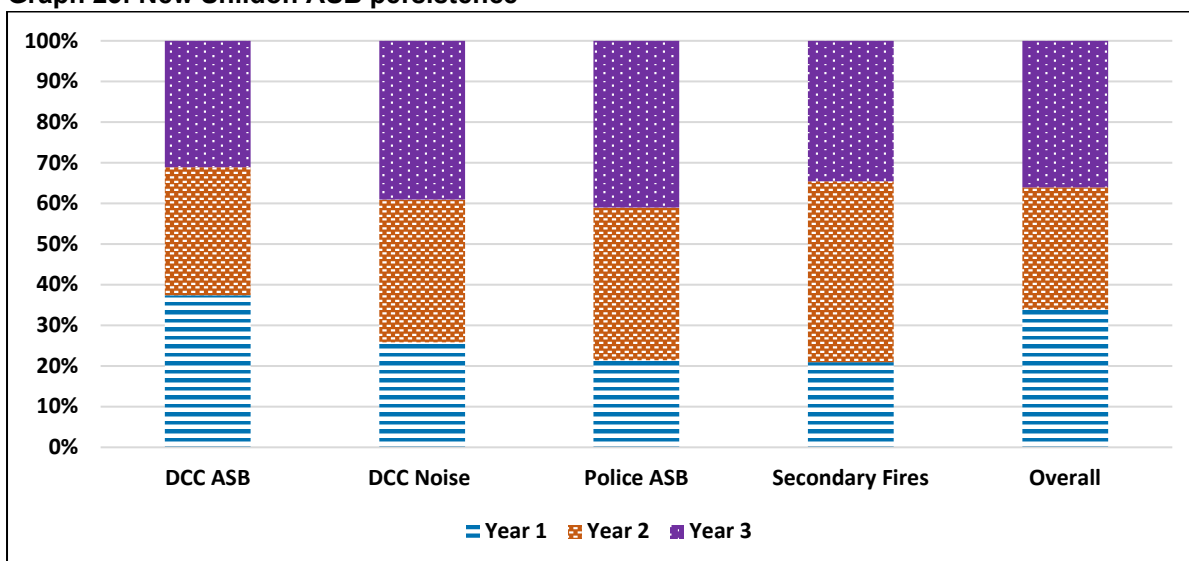
Graph 21: Murton Central ASB persistence



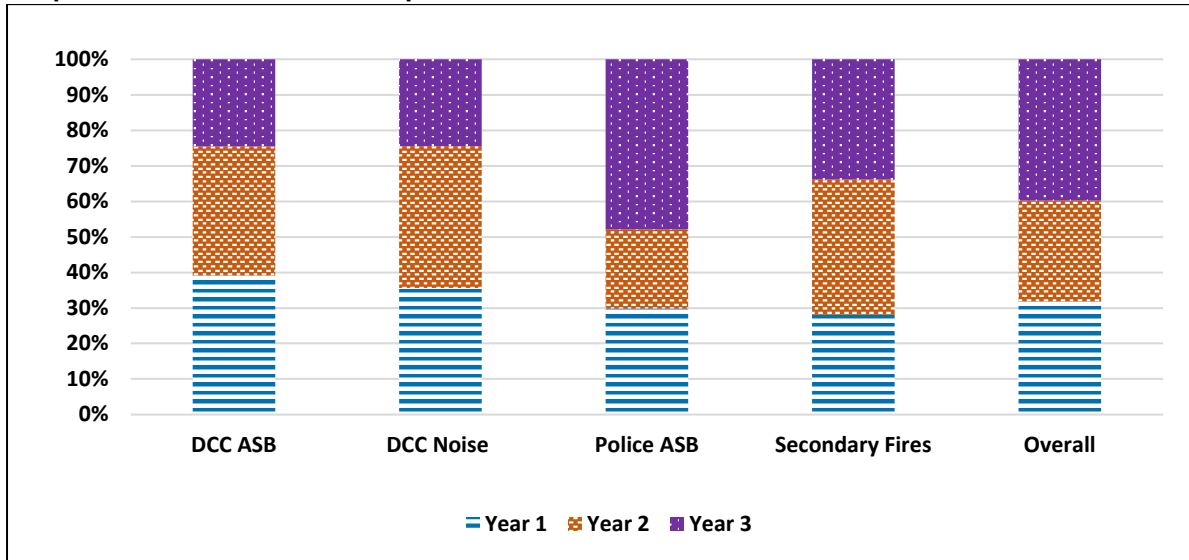
Graph 22: New Kyo ASB persistence



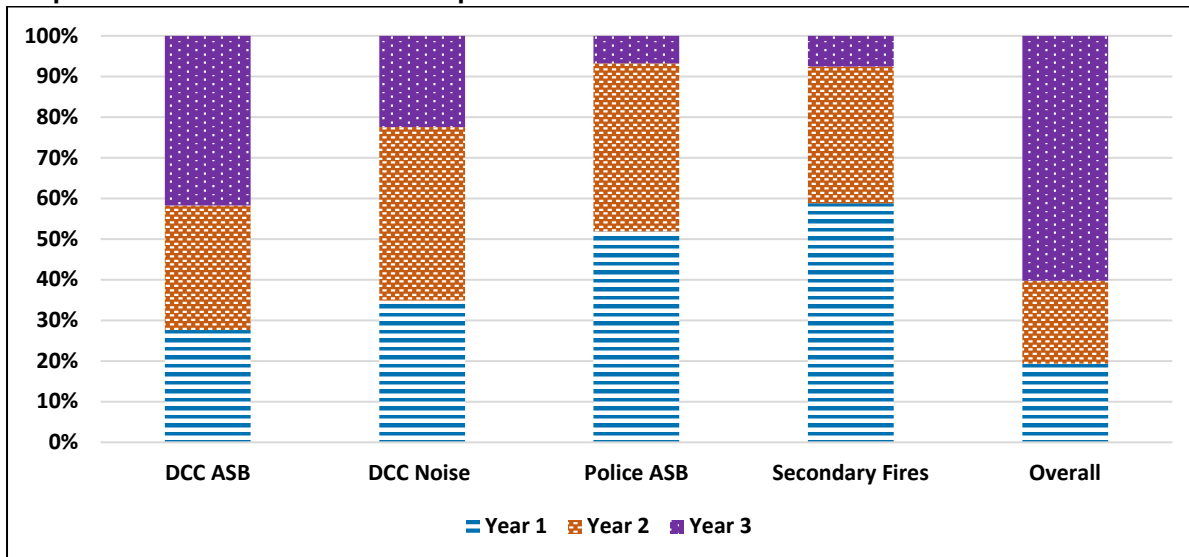
Graph 23: New Shildon ASB persistence



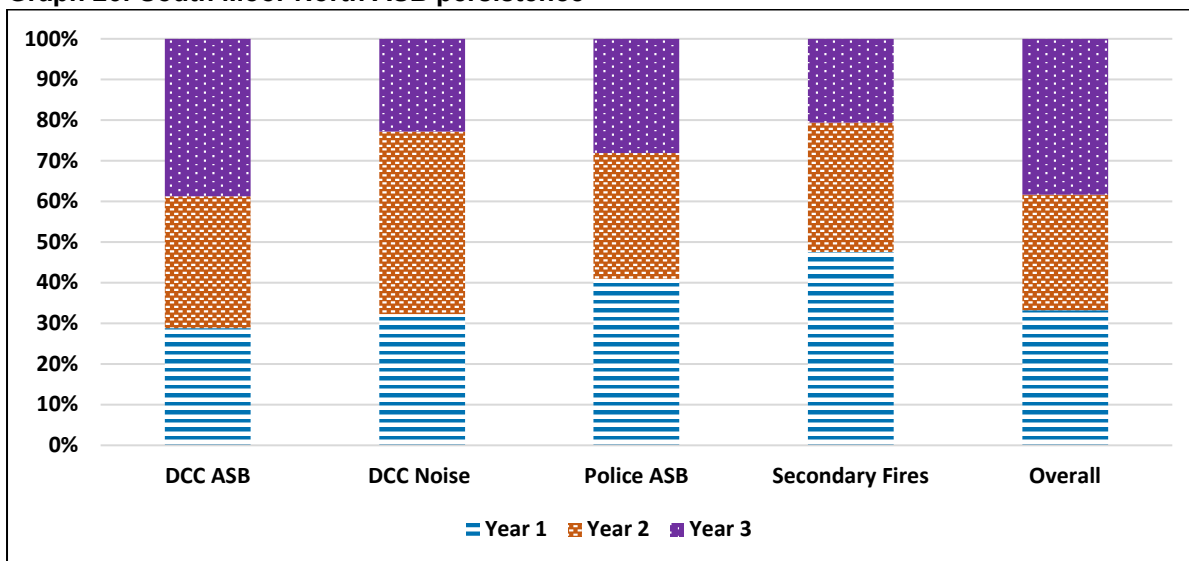
Graph 24: Passfield North ASB persistence



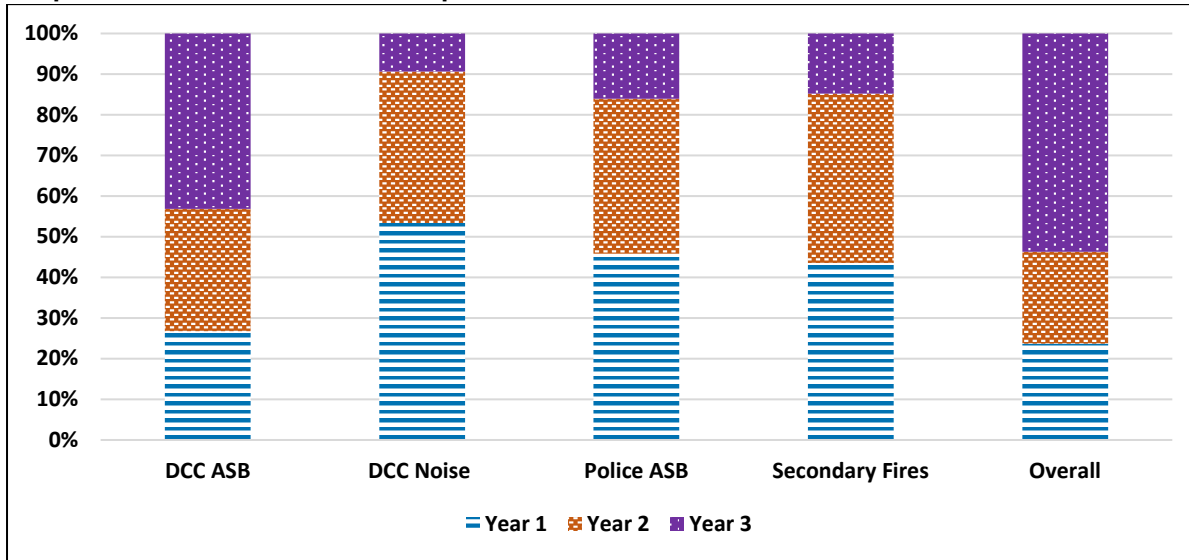
Graph 25: South Moor Central ASB persistence



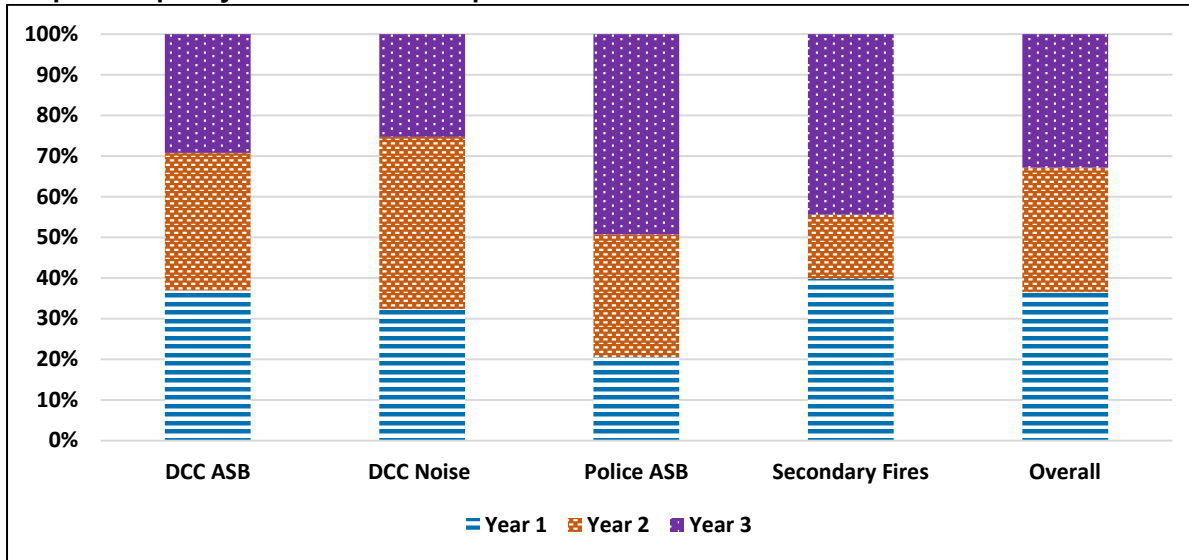
Graph 26: South Moor North ASB persistence



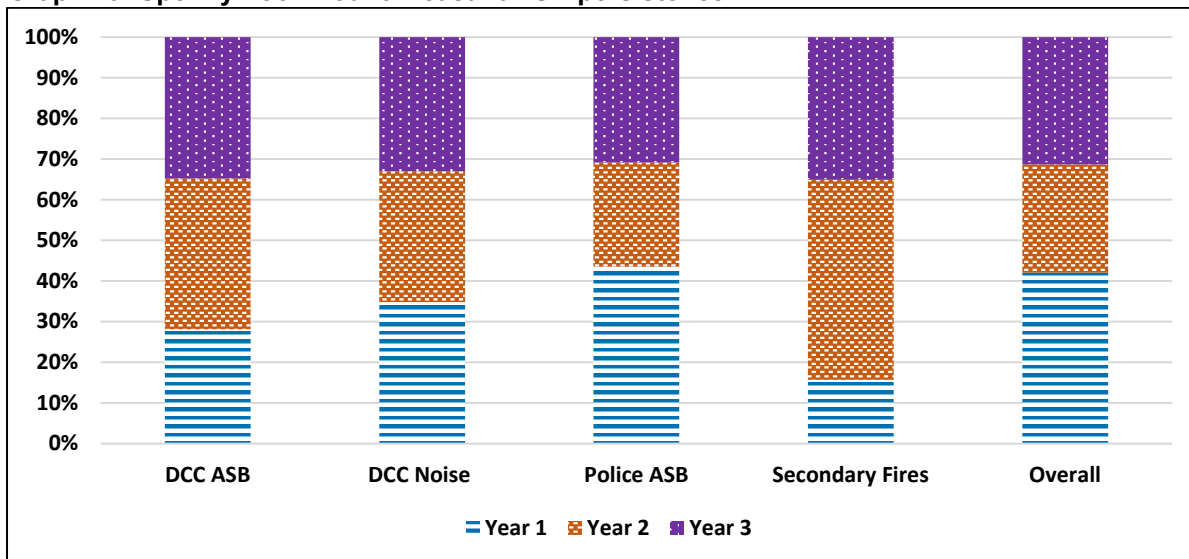
Graph 27: South Moor South ASB persistence



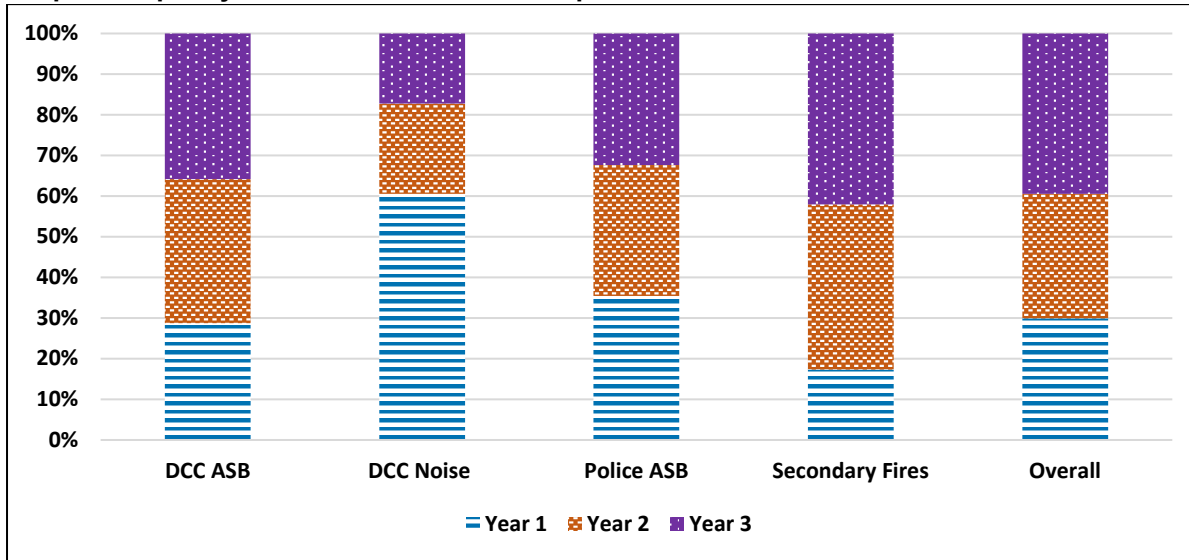
Graph 28: Spennymoor Central ASB persistence



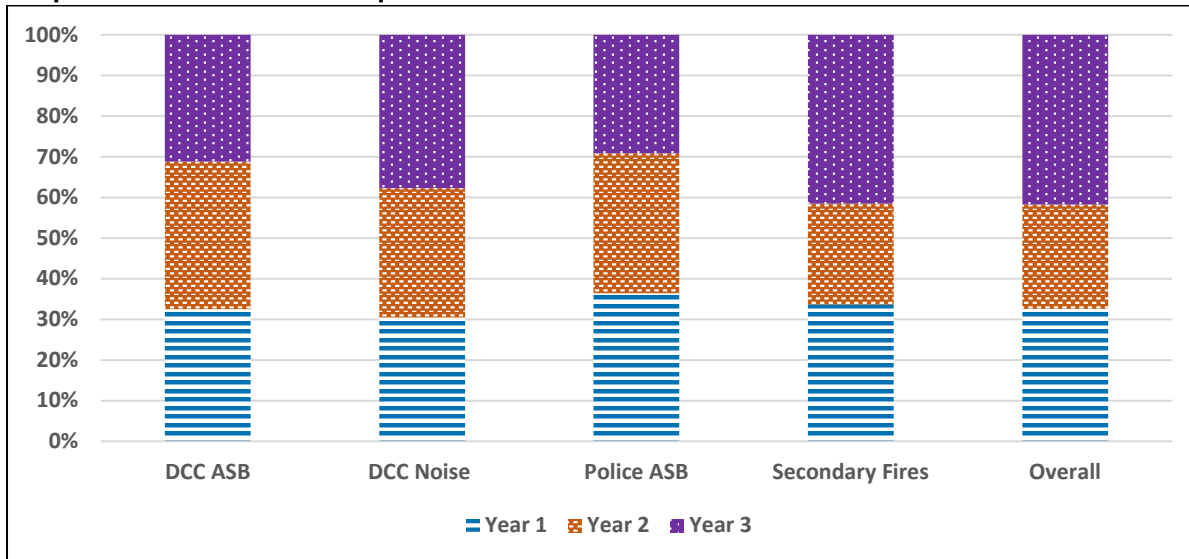
Graph 29: Spennymoor Mount Pleasant ASB persistence



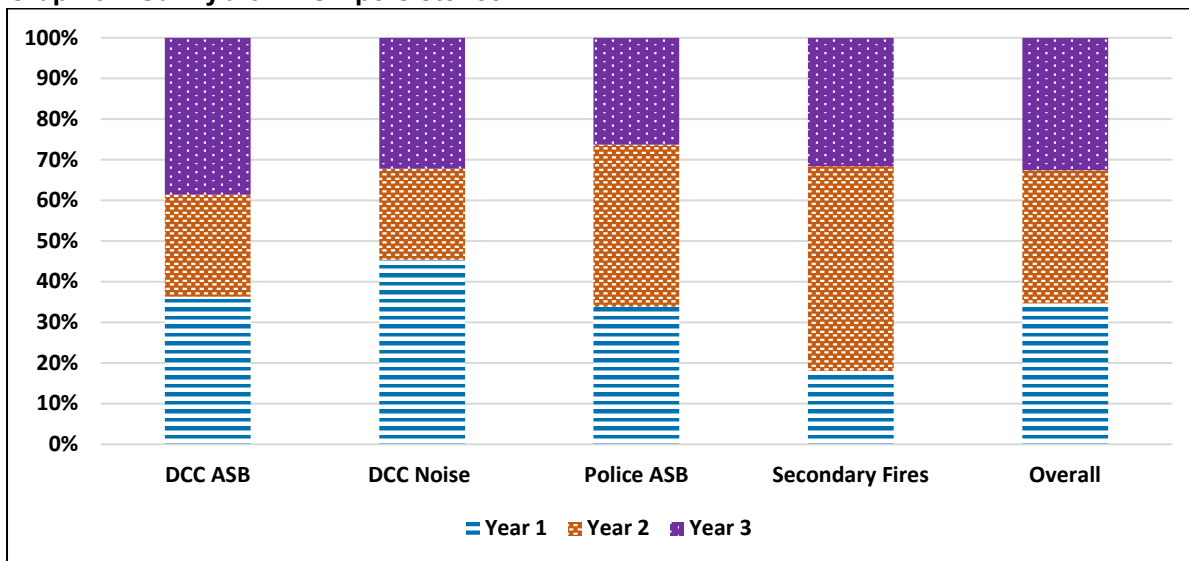
Graph 30: Spennymoor Whitworth Park ASB persistence



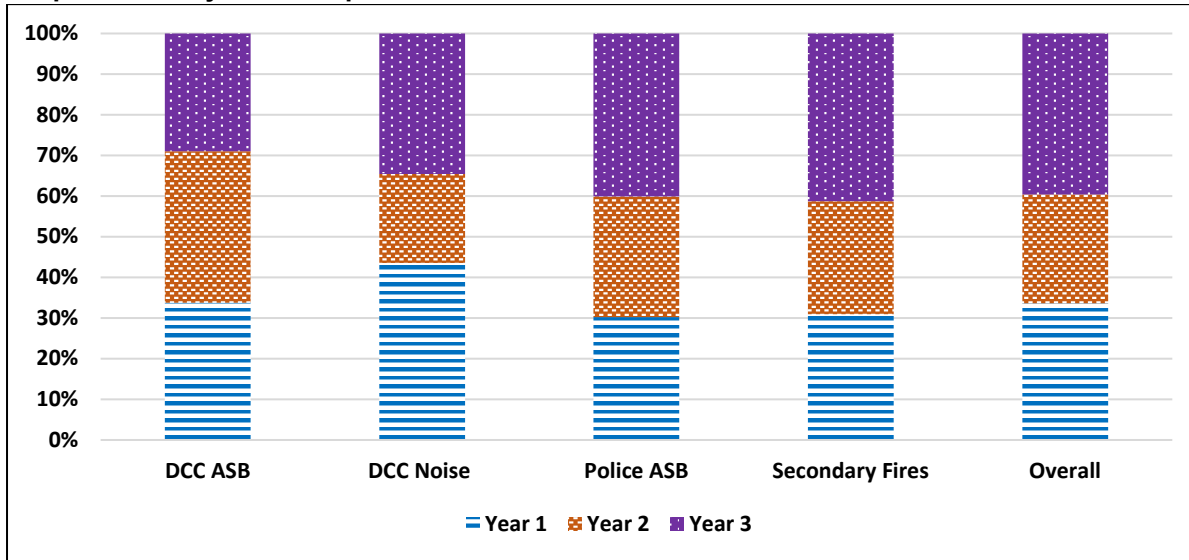
Graph 31: Station Town ASB persistence



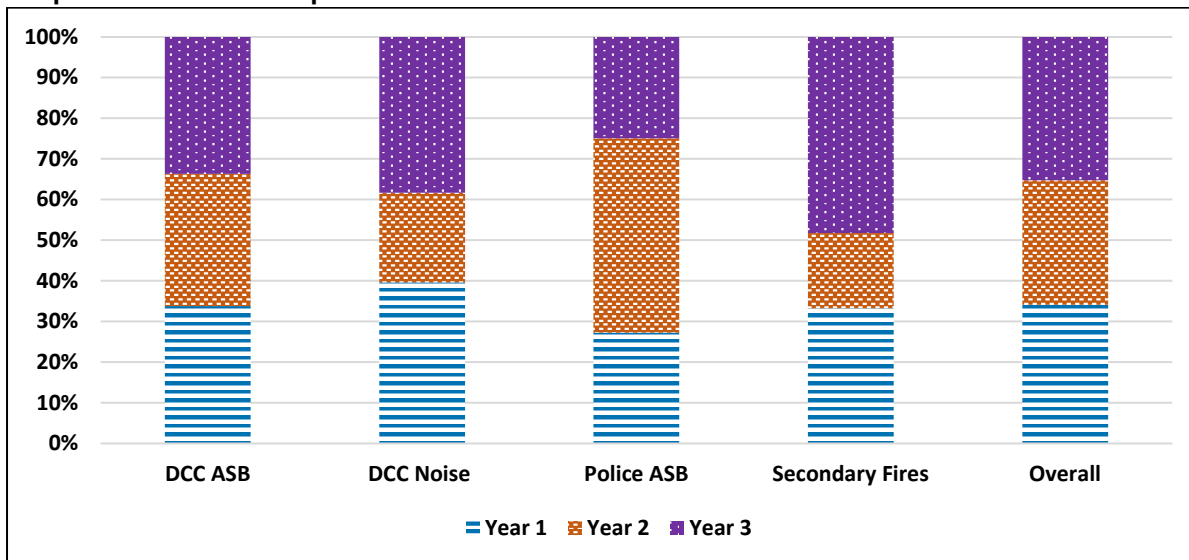
Graph 32: Sunnybrow ASB persistence



Graph 33: Sunnydale ASB persistence



Graph 34: Toronto ASB persistence



Graph 35: Wheatley Hill North ASB persistence

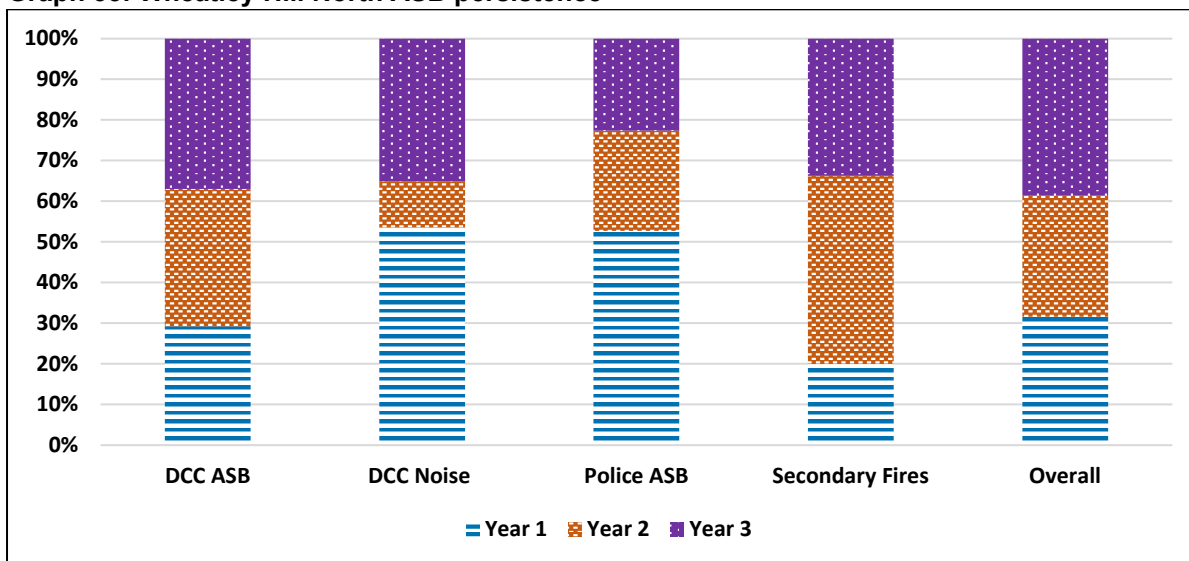


Table 5: ASB incident rates per LSOA in County Durham

LSOA Name	ASB Rate (per 10k population)
Ferryhill Dene Bank North	10116.01
South Moor Central	6235.65
Easington Colliery North	8364.37
Dawdon North 2	3918.92
Ferryhill Station and Chilton Lane	6561.68
Horden Central	12439.02
Blackhall Colliery South	6219.31
Murton East	4215.31
Henknowle North	4463.32
Spennymoor Central	3590.73
New Kyo	3290.21
Easington Colliery Centra	4052.73
Coundon Grange	5420.14
Grange Villa	4551.33
Toronto	5146.84
Dawdon South 2	2570.93
Nevilles Cross South and Merryoaks	284.16
Eldon	3938.69
Cockton Hill East	5728.16
Coundon South	3018.20
South Moor South	4549.30
Chester Central 2	4505.66
Horden East	7502.84
New Shildon	4302.26
Shildon West	3772.10
Crook Central 2	5471.82
Cockton Hill North	3076.92
Consett South	1725.23
Chester East 1	2016.75
Havannah South	4164.87
Consett West	3256.37
West North	2812.07
Horden South	1812.59
Woodhouse Close South	2093.02
Dalton Park	2120.10
Newfield	2129.42
Leadgate Central	1209.08
Nevilles Cross South and Cock of the North	104.06
Willington Central	3528.60
Langley Moor and Littleburn	1727.56
Blackhall Colliery North	1889.82
Gilesgate South	1579.27
South Moor North	3125.00
Leadgate North	1447.04
Station Town	2535.21

Shotton East	4405.55
Howlatch East	2314.34
Eden Hill Central	2637.74
South Hetton East	1010.53
The Sands and St Bede	562.17
Deaf Hill	3082.05
Seaham Harbour South	3866.93
Pity Me	993.15
West Cornforth	2700.12
West Auckland East	5003.07
Framwellgate Moor West	1093.99
Eden Hill South	2366.29
Midridge South	3650.19
Dene House Central	4820.87
Sunnydale	2932.38
Crossgate Moor North	3441.96
Wheatley Hill North	3908.05
Bournmoor West	2422.87
Acre Rigg South	2979.70
Acre Rigg North	3221.19
Henknowle South	1889.23
Annfield Plain	2250.17
Blackhill East	1119.85
Langley Park East	1631.69
Tow Law Central	1168.22
Stanley Crook	982.10
Ferryhill South	1917.13
Bowburn South	2062.88
Aykley Heads	1444.14
Willington West	1467.42
Woodham Village SW	1613.92
West Central	2073.60
Barningham & Greta	288.60
Old Elvet & Whinney Hill	1131.35
Ushaw Moor West	1303.30
Sedgefield West	471.94
Newton Hall North West	1054.19
Moorside West	1832.92
Middleton in Teesdale and Romalkirk	490.69
Newton Hall South East	331.18
Catchgate North	1893.35
Passfield East	2664.92
Roddymoor	1513.63
Chester North 3	686.98
Staindrop	527.82
Chilton North	3824.64
Craghead South	1633.51

Shildon East	2162.92
Horden West	2015.50
Waterhouses	1680.20
Tow Law Rural	1359.06
Langley Park West	1037.74
Passfield North	2423.55
Consett East	768.88
Crossgate Moor South	1076.68
Sacriston West	1343.38
Bishop Auckland Town	5598.64
St Helens Auckland Tindale Crescent	4662.89
Thickley	1857.39
Fishburn	2057.61
Stanley Hall West	2119.46
Newton Hall South	654.98
Hunwick	1341.14
Langley Moor and Meadowfield	1278.99
West South	2437.54
Seaham Harbour Central 1	1224.82
Murton Moor & Sth Hetton	2168.11
Ferryhill Central West	1927.37
Eden Hill North	2648.10
Haswell	1474.08
Waldrige North	448.52
Helmington row	1445.87
Morley	1410.58
Urpeth	647.18
Ferryhill North	2303.70
Greencroft	2394.96
Gilesgate Moor South	1974.52
St Nicholas and Houghall	1245.64
Belmont	618.49
Shincliffe	587.28
Easington Colliery South	1402.06
Wingate West	1935.48
Ushaw Moor East	2093.84
Ingleton	687.50
Midridge Central 2	880.55
Oakenshaw	2200.37
Broompark	979.35
Consett North	795.13
Seaham Hall	671.94
Wheatley Hill South	1771.63
Havannah North	2039.19
Evenwood	1894.35
Carrville North	974.70
Trimdon Grange	2039.80

Gilesgate North	1531.39
Stanley Hall North	1382.67
Pelton South	1870.93
Catchgate South	955.20
Woodham Village NE	853.84
Howletch South	1364.03
The Grove North	1105.85
Tudhoe	1126.01
Carrville South	783.72
Dene House East	1592.47
High Urpeth	1804.46
Startforth	664.83
Nevilles Cross North	556.83
Horden North	1721.46
Woodham Village SE	941.28
Gilesgate Moor North	638.01
Dawdon South 1	1343.52
Ushaw Moor South and New Brancepeth	2269.74
Wolsingham Rural	849.88
Shotton Colliery Central	2271.78
Hett	2331.08
Benfieldside South	522.03
West Auckland West	1307.42
Lanchester Rural	1250.78
Hamsterley	641.09
Delves North	1236.72
Tanfield & Tantobie	1421.74
Chester East 2	1651.00
Low Spennymoor	2878.41
Tudhoe Grange West	424.98
The Grove South and Moorside East	1823.75
Tanfield Lea East	1650.25
Frosterly	709.40
Witton Gilbert South	1515.15
Escomb West	989.65
Newton Hall South West	1175.58
Sunnybrow	3231.18
Sacrison North	1968.65
Blackhall Rocks	1942.48
Cockfield	916.33
Dawdon North 1	1271.00
Deneside West	1445.59
Pelton North	3016.73
Howden le Wear	1405.16
Ferryhill Dene Bank South	2331.13
Stanley Hall East	1218.54
Craghead North	1555.94

Newton Hall North East	307.59
Deneside South	646.67
Neville & Simpasture West	1708.51
Medomsley	655.63
Benfieldside North	355.95
Chilton South and Rushyford	1496.44
Shadforth	2295.16
Dipton East	977.97
Tudhoe Grange North	1006.83
Great Lumley West	653.74
Havannah Central	1304.10
Crookhall	1425.90
Passfield South	660.59
Brasside	720.92
Delves South	1000.00
Eggleston & Cotherstone	308.34
Shafto St Marys East	1375.79
Midridge Central 1	678.96
Low Etherley	1014.95
Crook East	1951.85
Coxhoe Central	1037.81
Ouston South	1107.91
Edmondsley	1768.90
Chester North 1	1003.61
West Rainton	1387.28
Howletch North	1259.33
Dipton West	1891.52
Castle Eden	1865.75
Spennymoor Mount Pleasant	2626.90
Fishburn Central	1094.83
Woodham Village NW	490.95
Middlestone Moor	1481.28
South Church	1933.59
Chester West 2	1325.36
Kirk Merrington	832.96
Bournmoor East	1644.19
Thornley North	1222.04
School Aycliffe	1346.15
Escomb East	523.29
Wolsingham	439.12
Deneside East	1604.28
Barnard Castle West	1439.49
Barnard Castle North	362.83
Belmont Rennys Lane	242.29
Woodhouse Close North	3137.40
Trimdon North	956.77
Murton Central	2276.52

Brandon North	1398.75
Spennymoor Whitworth Park	2265.02
Shafto St Marys West	2587.31
Wingate East	1111.63
Castleside	1667.70
Quebec	1677.38
Acre Rigg Central	1676.69
Framwellgate Moor East	1136.72
Seaham North 1	782.83
Esh Winning	1348.38
Stanhope	547.77
Seaham North 2	798.74
Crook West	978.06
Shotton Colliery West	1028.60
St Johns Chapel	312.09
Pelton Fell	1658.16
Hamsterley Mill	933.20
Seaton East and Northlea	1208.89
Easington Village South	1386.62
Passfield West	386.89
Sherburn Road	1614.80
Ouston North	633.28
Willington East	797.14
Blackhill West	924.68
Murton West	993.15
High Etherley	590.55
Picktree	540.93
St Helens Auckland Central	1787.40
Ebchester	967.74
Drum Lane	771.22
Dene House West	4528.82
Burnopfield East	451.08
Shafto St Marys South	1830.76
Waldrige South	134.15
Seaham Harbour Central 2	921.70
Pittington	1227.12
Tanfield Lea West	1805.91
Lanchester Central West	133.61
Tudhoe Grange East	804.20
Burnopfield West	809.35
Leadgate South	1447.37
Burnopfield Central	1125.67
Barnard Castle East	412.60
Great Lumley East	1698.11
Thornley South	1232.49
Sherburn South	1099.03
Chester West 1	1830.79

Coxhoe South	492.88
Midridge North	978.82
Consett and Genisis Way	670.70
Dalton le Dale	1718.65
Sacriston East	897.86
Brancepeth	1419.56
Trimdon South	2153.63
Sedgefield Mordon	1308.76
Witton Gilbert North	707.20
Blackhill Central	926.04
Bearpark	1626.43
Byers Green	1434.56
Spennymoor Tudhoe Moor	494.27
Cornsay Colliery	1147.13
Burnhope	1635.10
Pelton West	1060.83
Chilton	2209.83
Shafto St Marys North	3598.00
Chester North 2	1445.70
Plawsworth	1421.37
Chester South 2	266.76
Cassop	858.44
Neville & Simpasture East	1200.22
Great Lumley Central	708.84
Bishop Middleham	1073.13
Cockton Hill West	397.20
Stanley Hall South	2193.24
Spennymoor Rock Road	1196.40
Deneside North	2843.30
Easington Village North	1240.00
Brandon South	1412.87
Lanchester Central East	611.81
Sedgefield East	774.22
Sherburn North	905.28
Coundon North	3071.94
Kelloe	2582.95
Bowburn North	1289.06
Coxhoe North	1229.05
Brandon Central	2112.14
Aycliffe Ind Estate	1795.35
Benefieldside Central	527.97
Crook Central 1	1493.02
Brandon East	1961.51
Woodhouse Close Central	3015.60
Henknowle Central	1463.83
Leamside	2453.27
Chester South 1	1422.12

Tudhoe Grange South	1423.19
Ferryhill Central East	1124.56
Chester Central 1	1874.58
Grand Total	1778.89

Table 6: LSOAs in County Durham in the top 20% most deprived nationally

LSOA Name	Percentage
Acre Rigg North	Top 10%
Acre Rigg South	Top 10%
Annfield Plain	Top 10%
Blackhall Colliery South	Top 10%
Brandon Central	Top 10%
Chester Central 1	Top 10%
Chilton	Top 10%
Coundon Grange	Top 10%
Coundon North	Top 10%
Coundon South	Top 10%
Crook East	Top 10%
Dawdon North 2	Top 10%
Deaf Hill	Top 10%
Dene House Central	Top 10%
Deneside East	Top 10%
Deneside North	Top 10%
Easington Colliery North	Top 10%
Eden Hill Central	Top 10%
Eden Hill North	Top 10%
Eden Hill South	Top 10%
Eldon	Top 10%
Evenwood	Top 10%
Ferryhill Central East	Top 10%
Ferryhill Dean Bank North	Top 10%
Ferryhill Dean Bank South	Top 10%
Ferryhill Station and Chilton Lane	Top 10%

Grange Villa	Top 10%
Henknowle Central	Top 10%
Horden Central	Top 10%
Horden East	Top 10%
Horden North	Top 10%
Midridge South	Top 10%
Murton Central	Top 10%
Murton East	Top 10%
New Shildon	Top 10%
Passfield East	Top 10%
Seaham Harbour South	Top 10%
Sherburn Road	Top 10%
Shildon East	Top 10%
Shotton Colliery Central	Top 10%
Shotton East	Top 10%
South Moor Central	Top 10%
South Moor South	Top 10%
St Helens Auckland Central	Top 10%
Stanley Hall South	Top 10%
Stanley Hall West	Top 10%
Sunnybrow	Top 10%
Sunnydale	Top 10%
Ushaw Moor East	Top 10%
West North	Top 10%
West South	Top 10%
Willington Central	Top 10%
Wingate West	Top 10%
Woodham Village SW	Top 10%
Woodhouse Close Central	Top 10%
Woodhouse Close South	Top 10%
Bearpark	Top 10%-20%

Blackhall Rocks	Top 10%-20%
Bournmoor East	Top 10%-20%
Bowburn North	Top 10%-20%
Brandon East	Top 10%-20%
Burnhope	Top 10%-20%
Catchgate North	Top 10%-20%
Catchgate South	Top 10%-20%
Chester Central 2	Top 10%-20%
Chester South 1	Top 10%-20%
Chester West 2	Top 10%-20%
Cockfield	Top 10%-20%
Cockton Hill East	Top 10%-20%
Craghead South	Top 10%-20%
Crook Central 1	Top 10%-20%
Crook Central 2	Top 10%-20%
Dalton le Dale	Top 10%-20%
Dawdon South 1	Top 10%-20%
Dawdon South 2	Top 10%-20%
Dene House West	Top 10%-20%
Deneside West	Top 10%-20%
Dipton West	Top 10%-20%
Easington Colliery Central	Top 10%-20%
Easington Colliery South	Top 10%-20%
Esh Winning	Top 10%-20%
Ferryhill Central West	Top 10%-20%
Ferryhill North	Top 10%-20%
Ferryhill South	Top 10%-20%
Fishburn Central	Top 10%-20%
Greencroft	Top 10%-20%
Haswell	Top 10%-20%
Henknowle North	Top 10%-20%

Henknowle South	Top 10%-20%
Horden South	Top 10%-20%
Horden West	Top 10%-20%
Howletch East	Top 10%-20%
Howletch North	Top 10%-20%
Kelloe	Top 10%-20%
Langley Park East	Top 10%-20%
Leadgate Central	Top 10%-20%
Leadgate South	Top 10%-20%
Leamside	Top 10%-20%
Low Spennymoor	Top 10%-20%
Middlestone Moor	Top 10%-20%
Moorside West	Top 10%-20%
Morley	Top 10%-20%
Murton Moor & South Hetton	Top 10%-20%
New Kyo	Top 10%-20%
Passfield North	Top 10%-20%
Pelton North	Top 10%-20%
Pelton South	Top 10%-20%
Seaham North 2	Top 10%-20%
Shadforth	Top 10%-20%
Shafto St Marys North	Top 10%-20%
Shafto St Marys South	Top 10%-20%
Shildon West	Top 10%-20%
South Moor North	Top 10%-20%
Spennymoor Central	Top 10%-20%
Spennymoor Mount Pleasant	Top 10%-20%
Stanley Hall East	Top 10%-20%
Stanley Hall North	Top 10%-20%
Station Town	Top 10%-20%
The Grove South and Moorside East	Top 10%-20%

Thornley North	Top 10%-20%
Toronto	Top 10%-20%
Tow Law Central	Top 10%-20%
Tow Law Rural	Top 10%-20%
Trimdon Grange	Top 10%-20%
Trimdon South	Top 10%-20%
Tudhoe Grange South	Top 10%-20%
Ushaw Moor South and New Brancepeth	Top 10%-20%
West Auckland East	Top 10%-20%
West Central	Top 10%-20%
West Cornforth	Top 10%-20%
Wheatley Hill North	Top 10%-20%
Wheatley Hill South	Top 10%-20%
Woodhouse Close North	Top 10%-20%

Table 7: All LSOAS proposed for designation by condition met

LSOA Name	All Residential Properties (2025)	Estimate Private Rented Sector (PRS) 2025	Proposed designation due to condition met
Acre Rigg North	551	155	Deprivation
Acre Rigg South	513	144	Deprivation
Annfield Plain	790	220	Deprivation
Blackhall Colliery North	656	207	Low Demand
Blackhall Colliery South	800	388	Low Demand, ASB and deprivation
Catchgate North	831	210	ASB
Catchgate South	791	172	Low Demand
Chester Central 1	662	67	ASB
Chester Central 2	734	286	ASB
Cockton Hill East	702	284	Low Demand
Cockton Hill North	887	321	Low Demand
Consett South	1066	378	Low Demand
Consett West	1151	402	Low Demand
Coundon Grange	1202	527	Low Demand, ASB and deprivation
Coundon North	713	101	ASB
Coundon South	879	351	Low Demand, ASB and deprivation
Crook Central 2	828	299	Low Demand, ASB and deprivation
Dalton Park	754	256	Low Demand
Dawdon North 2	581	306	Low Demand, ASB and deprivation

Dawdon South 1	741	155	Deprivation
Dawdon South 2	795	327	Low Demand
Deaf Hill	721	218	Low Demand, ASB and deprivation
Dene House Central	657	190	Deprivation
Easington Colliery Central	891	392	Low Demand, ASB and deprivation
Easington Colliery North	731	400	Low Demand, ASB and deprivation
Easington Colliery South	924	207	Deprivation
Eden Hill Central	690	210	Deprivation
Eden Hill North	825	194	Deprivation
Eden Hill South	568	167	Deprivation
Eldon	940	387	Low Demand, ASB and deprivation
Ferryhill Dean Bank North	791	475	Low Demand, ASB and deprivation
Ferryhill Dean Bank South	879	173	ASB
Ferryhill North	718	164	Low Demand
Ferryhill South	741	197	Low Demand
Ferryhill Station and Chilton Lane	676	353	Low Demand, ASB and deprivation
Grange Villa	823	360	Low Demand, ASB and deprivation
Greencroft	903	206	Low Demand
Haswell	947	222	Low Demand
Havannah South	947	332	Low Demand
Henknowle North	633	287	Low Demand
Henknowle South	669	187	Deprivation
Horden Central	783	405	Low Demand, ASB and deprivation
Horden East	1007	392	Low Demand, ASB and deprivation
Horden North	787	166	Deprivation
Horden South	704	245	Deprivation
Horden West	750	186	Deprivation
Howletch East	510	156	Deprivation
Leadgate Central	718	235	Low Demand
Low Spennymoor	1180	239	ASB
Midridge South	600	176	Deprivation
Murton Central	847	151	ASB
Murton East	728	332	Low Demand
Murton Moor & Sth Hetton	769	181	Deprivation
New Kyo	902	398	Low Demand, ASB and deprivation
New Shildon	1051	396	Low Demand, ASB and deprivation
Newfield	664	219	Low Demand
Passfield East	730	184	Deprivation
Passfield North	602	148	ASB
Seaham Harbour South	875	264	Deprivation
Shildon East	869	216	Deprivation

Shildon West	782	294	Low Demand
Shotton East	766	236	Deprivation
South Moor Central	722	405	Low Demand, ASB and deprivation
South Moor North	823	257	Low Demand, ASB and deprivation
South Moor South	885	348	Low Demand, ASB and deprivation
Spennymoor Central	774	347	Low Demand, ASB and deprivation
Spennymoor Mount Pleasant	928	171	ASB
Spennymoor Whitworth Park	928	164	ASB
Stanley Crook	947	255	Low Demand
Stanley Hall North	859	188	Deprivation
Stanley Hall West	888	212	Deprivation
Station Town	1050	324	Low Demand, ASB and deprivation
Sunnybrow	686	137	ASB
Sunnydale	846	244	Low Demand, ASB and deprivation
Toronto	690	289	Low Demand, ASB and deprivation
Trimdon Grange	838	184	Low Demand
West Central	665	175	Deprivation
West Cornforth	1330	395	Low Demand
West North	634	221	Deprivation
West South	705	167	Deprivation
Wheatley Hill North	747	211	Low Demand, ASB and deprivation
Wheatley Hill South	696	153	Deprivation
Willington Central	706	228	Deprivation
Willington West	833	221	Low Demand
Wingate West	789	177	Deprivation
Woodham Village SW	561	148	Deprivation
Woodhouse Close South	767	265	Deprivation

List 2: All LSOAs not to be included in the proposed designations

- Ferryhill Central East
- Tudhoe Grange South
- Chester South 1
- Leamside
- Henknowle Central
- Woodhouse Close Central
- Brandon East
- Crook Central 1
- Benfieldside Central
- Aycliffe Ind Estate
- Brandon Central
- Coxhoe North
- Bowburn North
- Kelloe

- Sherburn North
- Sedgefield East
- Lanchester Central East
- Brandon South
- Easington Village North
- Deneside North
- Spennymoor Rock Road
- Stanley Hall South
- Cockton Hill West
- Bishop Middleham
- Great Lumley Central
- Neville & Simpasture East
- Cassop
- Chester South 2
- Plawsworth
- Chester North 2
- Shafto St Marys North
- Chilton
- Pelton West
- Burnhope
- Cornsay Colliery
- Spennymoor Tudhoe Moor
- Byers Green
- Bearpark
- Blackhill Central
- Witton Gilbert North
- Sedgefield Mordon
- Trimdon South
- Brancepeth
- Sacriston East
- Dalton le Dale
- Consett and Genesis Way
- Midridge North
- Coxhoe South
- Chester West 1
- Sherburn South
- Thornley South
- Great Lumley East
- Barnard Castle East
- Burnopfield Central
- Leadgate South
- Burnopfield West
- Tudhoe Grange East
- Lanchester Central West
- Tanfield Lea West
- Pitlington
- Seaham Harbour Central 2

- Waldrige South
- Shafto St Marys South
- Burnopfield East
- Dene House West
- Drum Lane
- Ebchester
- St Helens Auckland Central
- Picktree
- High Etherley
- Murton West
- Blackhill West
- Wellington East
- Ouston North
- Sherburn Road
- Passfield West
- Easington Village South
- Seaton East and Northlea
- Hamsterley Mill
- Pelton Fell
- St Johns Chapel
- Shotton Colliery West
- Crook West
- Seaham North 2
- Stanhope
- Esh Winning
- Seaham North 1
- Framwellgate Moor East
- Acre Rigg Central
- Quebec
- Castleside
- Wingate East
- Shafto St Marys West
- Brandon North
- Trimdon North
- Woodhouse Close North
- Belmont Rennys Lane
- Barnard Castle North
- Barnard Castle West
- Deneside East
- Wolsingham
- Escomb East
- School Aycliffe
- Thornley North
- Bournmoor East
- Kirk Merrington
- Chester West 2
- South Church

- Middlestone Moor
- Woodham Village NW
- Fishburn Central
- Castle Eden
- Dipton West
- Howletch North
- West Rainton
- Chester North 1
- Edmondsley
- Ouston South
- Coxhoe Central
- Crook East
- Low Etherley
- Midridge Central 1
- Shafto St Marys East
- Eggleston & Cotherstone
- Delves South
- Brasside
- Passfield South
- Crookhall
- Havannah Central
- Great Lumley West
- Tudhoe Grange North
- Dipton East
- Shadforth
- Chilton South and Rushyford
- Benfieldside North
- Medomsley
- Neville & Simpasture West
- Deneside South
- Newton Hall North East
- Craghead North
- Stanley Hall East
- Howden le Wear
- Pelton North
- Deneside West
- Dawdon North 1
- Cockfield
- Blackhall Rocks
- Sacriston North
- Newton Hall South West
- Escomb West
- Witton Gilbert South
- Frosterly
- Tanfield Lea East
- The Grove South and Moorside East
- Tudhoe Grange West

- Chester East 2
- Tanfield & Tantobie
- Delves North
- Hamsterley
- Lanchester Rural
- West Auckland West
- Benfieldside South
- Hett
- Shotton Colliery Central
- Wolsingham Rural
- Ushaw Moor South and New Brancepeth
- Gilesgate Moor North
- Woodham Village SE
- Nevilles Cross North
- Startforth
- High Urpeth
- Dene House East
- Carrville South
- Tudhoe
- The Grove North
- Howletch South
- Woodham Village NE
- Pelton South
- Gilesgate North
- Carrville North
- Evenwood
- Havannah North
- Seaham Hall
- Consett North
- Broompark
- Oakenshaw
- Midridge Central 2
- Ingleton
- Ushaw Moor East
- Shincliffe
- Belmont
- St Nicholas and Houghall
- Gilesgate Moor South
- Urpeth
- Morley
- Helmington row
- Waldrige North
- Ferryhill Central West
- Seaham Harbour Central 1
- Langley Moor and Meadowfield
- Hunwick
- Newton Hall South

- Fishburn
- Thickey
- St Helens Auckland Tindale Crescent
- Bishop Auckland Town
- Sacriston West
- Crossgate Moor South
- Consett East
- Langley Park West
- Tow Law Rural
- Waterhouses
- Craghead South
- Chilton North
- Staindrop
- Chester North 3
- Roddymoor
- Newton Hall South East
- Middleton in Teesdale and Romalkirk
- Moorside West
- Newton Hall North West
- Sedgefield West
- Ushaw Moor West
- Old Elvet & Whinney Hill
- Barningham & Greta
- Aykley Heads
- Bowburn South
- Tow Law Central
- Langley Park East
- Blackhill East
- Bournmoor West
- Crossgate Moor North
- Framwellgate Moor West
- West Auckland East
- Pity Me
- The Sands and St Bede
- South Hetton East
- Leadgate North
- Gilesgate South
- Langley Moor and Littleburn
- Nevilles Cross South and Cock of the North
- Chester East 1
- Nevilles Cross South and Merryoaks